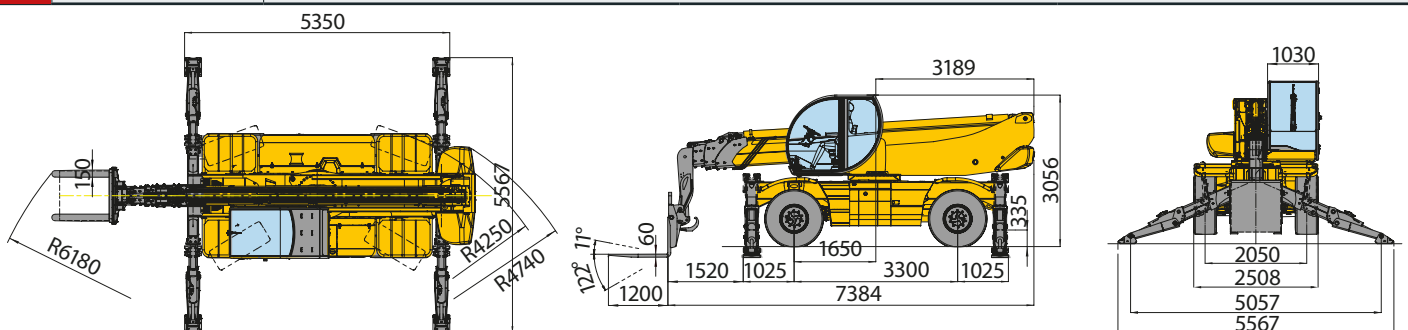


<b>MACHINE MODEL</b>	Rotating telescopic handler	RTH 6.24	
	Maximum lifting capacity	6.000 kg (center of gravity 600 mm)	
	Maximum lifting height	23,55 m	
<b>ENGINE</b>	Type	JCB ECOMAX 448-TA-4i tier 4 interim	JCB DIESELMAX 444 Euro 3A
	Rated power	108 KW - 146 HP at 2.200 rpm	108 KW - 146 HP at 2.200 rpm
	Maximum torque	550 Nm at 1.500 rpm	550 Nm at 1.500 rpm
	Displacement	4,8 l	4,4 l
	Cylinders	4 in line	4 in line
	Fuel	Diesel turbocharged	Diesel turbocharged
	Cooling system	Water – intercooler	Water – intercooler
<b>TRANSMISSION</b>	Type	Hydrostatic	
	Model	Bosch – Rexroth	
	Maximum pressure	500 bar	
	Displacements	Variable displacement pump (displacement max 85,4 cc/r) electronically controlled Variable displacement motor (displacement max 115,6 cc/r)	
	Gear box	2 speeds (4,06-1,43) forward-reverse	
<b>AXLES AND BRAKES</b>	Total ratio	17,5 on each axle	
	Rear axle	Oscillating and steering with hydraulic locking	
	Front axle	Oscillating and steering with automatic levelling +/- 10°	
	Service brake	Hydraulically activated, oil-immersed multi-disc type on each axle	
	Parking brake	Hydraulic with negative action	
	Tyres dimensions	18 x 22,5	
<b>PERFORMANCE</b>	Max. travel speed	40 km/h	
	Drawbar pull	88 kN	
	Gradeability	41%	
	Turning radius (end of forks)	6,18 m	
<b>WEIGHTS</b>	Total unladen	17.700 kg	
	Front axle unladen (boom retracted and lowered)	9.200 kg	
	Rear axle unladen (boom retracted and lowered)	8.500 kg	
<b>TANKS CAPACITIES</b>	Fuel tank	200 l	200 l
	Hydraulic oil tank	210 l	210 l
	Engine oil tank	16 l	16 l
	Cooling liquid	23 l	23 l
<b>HYDRAULIC CIRCUIT</b>	Max. operating system pressure	350 bar	
	Circuit type	Load sensing	
	Service pump	Bosch Rexroth – Variable displacement (max displacement 60 cc/r) – Flow rate 130 l/min	
	Controls for boom and turret movements	Sauer Danfoss – Electroproportional valve SIL 2	
	Controls for stabilizers	Bosch Rexroth – Electro-hydraulics controls	
	Movements control	2 joystick Sauer Danfoss with two shafts with dead man safety device Management with CAN bus technology	
<b>DIMENSIONS</b>	Max. length (boom retracted and lowered)	7.384 mm (at vertical point of forks foothold)	
	Max. width	2.508 mm (on wheels)	
	Max. height (boom retracted and lowered)	3.056 mm (on wheels)	
	Wheel base	3.300 mm	
	Ground clearance	335 mm	
<b>CONFORMTY TO STANDARDS</b>	EN 13849: concerning the safety of all controls of the machine EN 13000: concerning the standard of hydraulic cranes EN 280: concerning the standard of aerial platforms EN 15000: concerning the dynamic stability of the telescopic forklift FOPS/ROPS 97/68/CE: concerning engine emissions standards		





**Magni Telescopic Handlers srl**

Via Magellano, 22 - 41013 Castelfranco Emilia, Modena, Italia  
Tel: +39 059 8630811 - Fax: +39 059 8638012  
commerciale@magnith.com - www.magnith.com

The data in this brochure are informative and subject to change without notice



Maximum lifting height: 23,55 m

Maximum reach: 20,15 m

Engine: JCB 108 KW - 146 HP

Electronically controlled hydrostatic transmission

Automatic levelling device

MAGNI patented telescopic stabilizers



**RTH6.24**

# Full visibility cab MAGNI patented design



Pressurized cab  
ISO 10.263

Standard air conditioning  
and heating

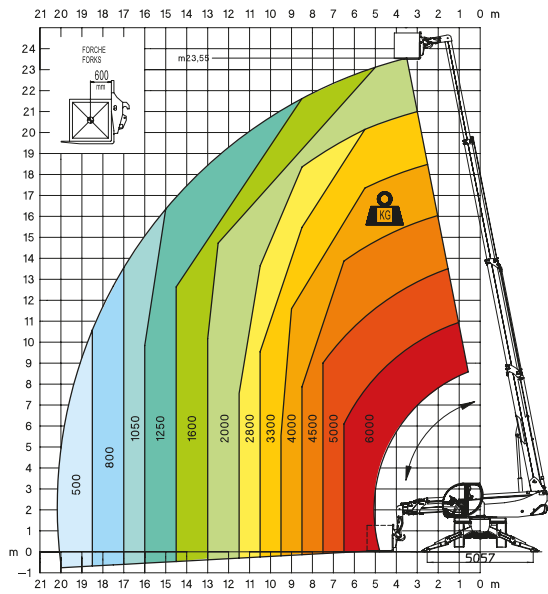
Touch screen  
display with joystick  
control system

From the left:

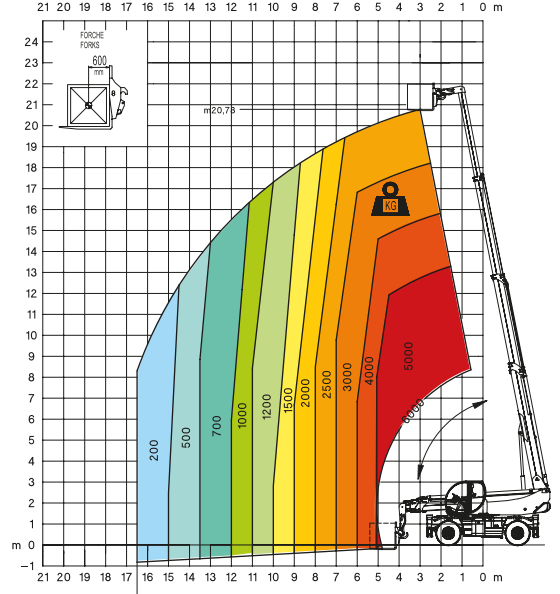
- Travelling mode screen
- Stabilizers control screen
- Load Moment Indicator screen
- Air conditioning management screen
- Customization screen



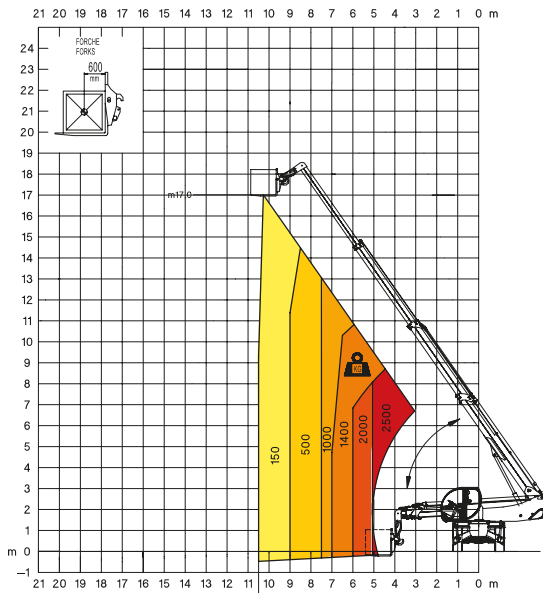
### 360° fully extended stabilizers load chart with forks



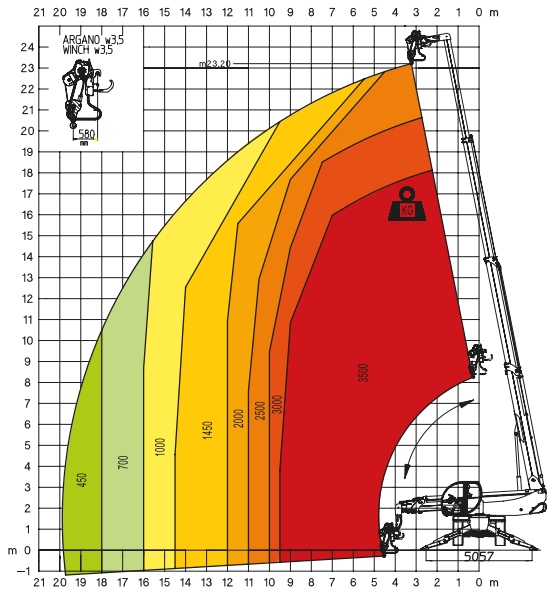
### Frontal position load chart on tyres with forks



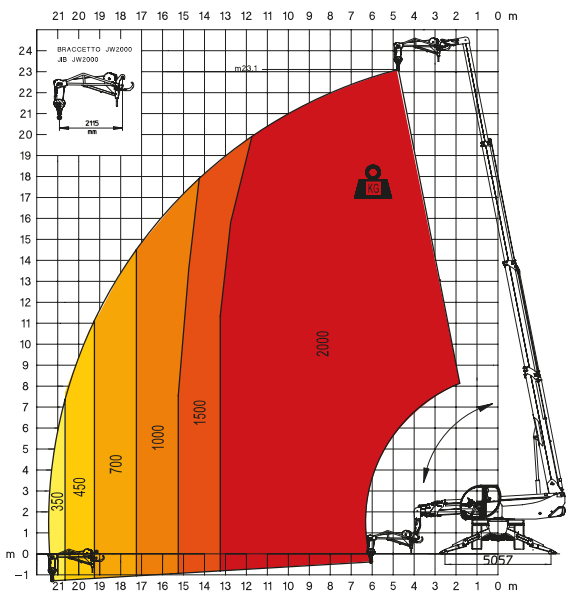
### 360° load chart on tyres with forks



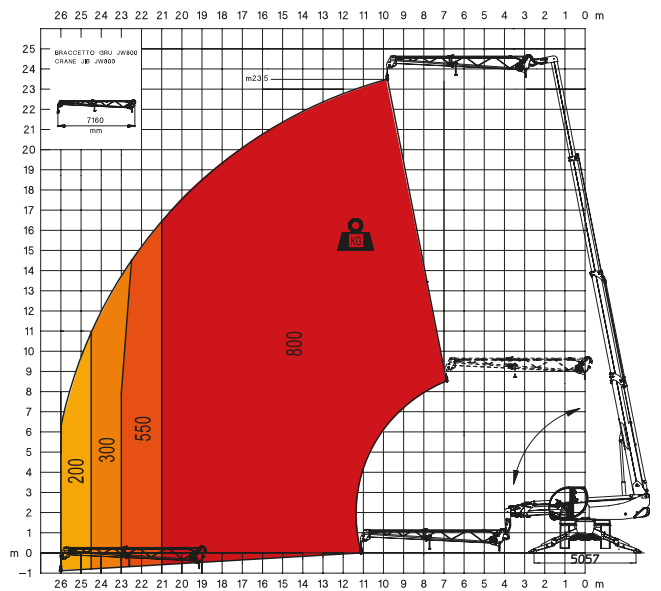
### Winch W 3,5



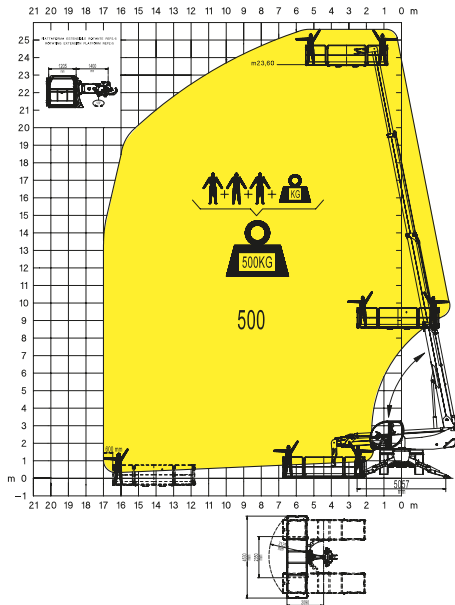
### Jib with winch JW 2000



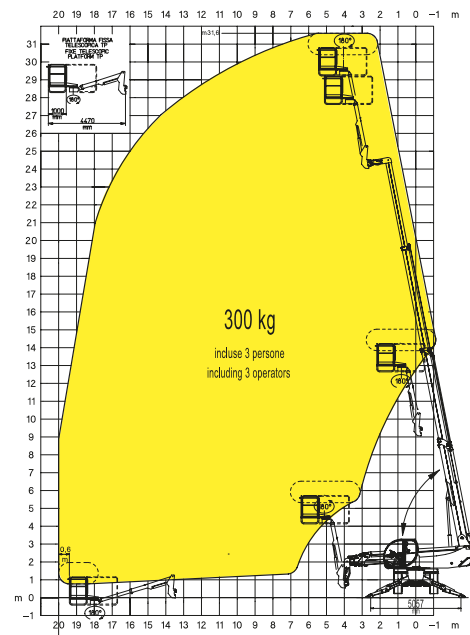
### JW 800



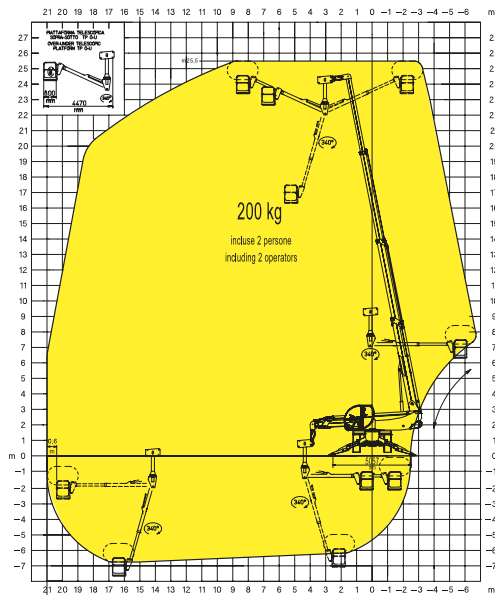
## Extendable rotating platform REP 2/5



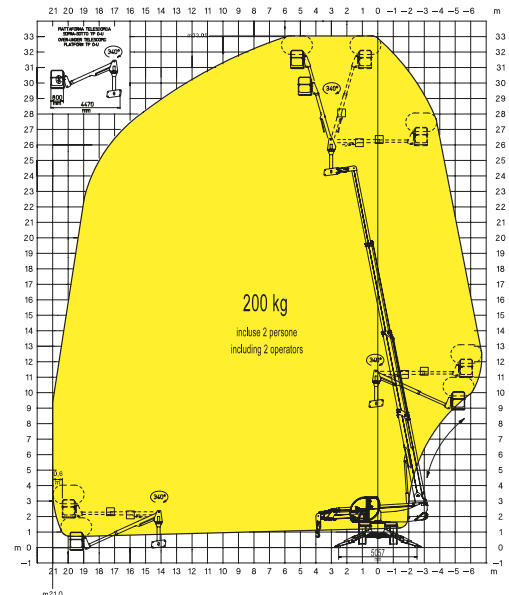
## Telescopic jib platform TP



## Positive-negative telescopic platform TP O-U



## Positive-negative telescopic platform TP O-U



- A 3 in 1 machine:
- Telescopic handler
  - Hydraulic crane
  - Access platform

- Safety device to prevent unhooking of the attachment (MAGNI patent)
- Attachments automatic recognition system RFID

