



New in the fleet!

BA36RT & BA36ERT

Articulated boom lifts



Large reach below
ground level



Four-wheel drive &
-steering



Max. gradeability 45%

New in the fleet!

BA36RT & BA36ERT Articulated boom lifts



The Dingli BA36RT & BA36ERT articulated telescopic boom lifts offer ultimate freedom in both height and reach. With an impressive **working height of approximately 36 metres** and a large horizontal outreach, these machines provide maximum flexibility on construction and maintenance sites, for example. Thanks to **four-wheel drive and four-wheel steering**, manoeuvring on rough terrain is both comfortable and safe. The **innovative axle extension** system ensures optimal stability as well as maximum manoeuvrability.

These aerial work platforms are available with an efficient diesel engine that complies with the latest Stage V emission standards, or as a 100% electric version powered by a high-capacity lithium battery, guaranteeing a full working day on a single charge.



Large reach below ground level




Four-wheel drive & -steering



Max. gradeability 45%


Technical data

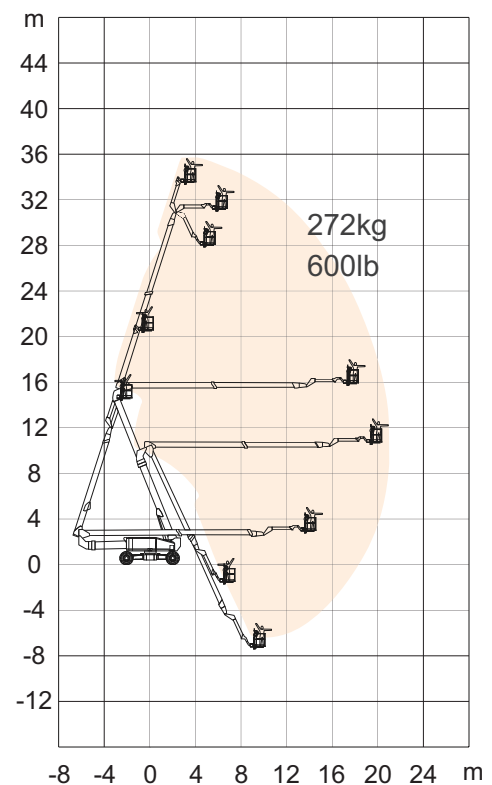
	BA36RT	BA36ERT 
Rental number	982535	982336
Working height (m)	36,20	36,20
Platform height (m)	34,20	34,20
Reach (m)	21,31	21,31
Up and over clearance (m)	15,75	15,75
Down Probing Depth (m)	4,37	4,37
Platform capacity (kg)	272	272
Tailswing (boom extended) (m)	1,22	1,22
Tailswing (boom retracted) (m)	4,26	4,26
Platform Rotation (°)	180	180
Jib Movement (°)	226	226
Turret Rotation (°)	360° continuous	360° continuous
Platform Size L x B (m)	2,44 x 0,91	2,44 x 0,91
Ground Clearance (m)	0,40	0,40
Turning Radius (axle extended) (m)	2,99/5,41	2,99/5,41
Turning Radius (axle retracted) (m)	8,27/10,85	8,27/10,85
Wheelbase (axle extended) (m)	4,07	4,07
Wheelbase (axle retracted) (m)	4,27	4,27
Gradeability (%)	45	45
Weight (kg)	22.070	22.070
Travel Speed (km/u)	6	6
Max. Working Slope (°)	5°	5°

Dimensions

	BA36RT	BA36ERT
Length (m)	11,91	11,91
Width (Axle Expanded) (m)	4,17	4,17
Width (Axle Retracted) (m)	2,44	2,44
Height (m)	3,03	3,03

Performance

	Stage V 	
Drive	Diesel 75 PS	Electro
Volume Hydraulic Tank (l)	230	230
Volume Diesel Tank (l)	135	-
Lithium Battery	-	228Ah/358.4V
Charger	-	16A/32A



- Large reach below ground level
- Mobile at full height
- High ground clearance
- Patented Axle Expansion