



New in the fleet!

ZA32J

Articulated boom lift



Large reach below
ground level



Four-wheel drive



Max. gradeability 45%

New in the fleet!

ZA32J

Articulated boom lift



The ZA32J diesel articulated telescopic boom lift is designed for top performance at great heights. With an impressive working height of 33.85 metres and a horizontal outreach of no less than 21.17 metres, this machine offers exceptional versatility on site. The fully rotating platform ensures maximum freedom of movement and efficiency, even in the most complex working environments.

What truly sets it apart is its outstanding below-ground reach of up to 5.7 metres, making even challenging downward operations easily achievable. The ideal choice for professionals who refuse to compromise on power, reach and versatility.



Large reach below ground level



Four-wheel drive



Max. gradeability 45%

Technical data

ZA32J

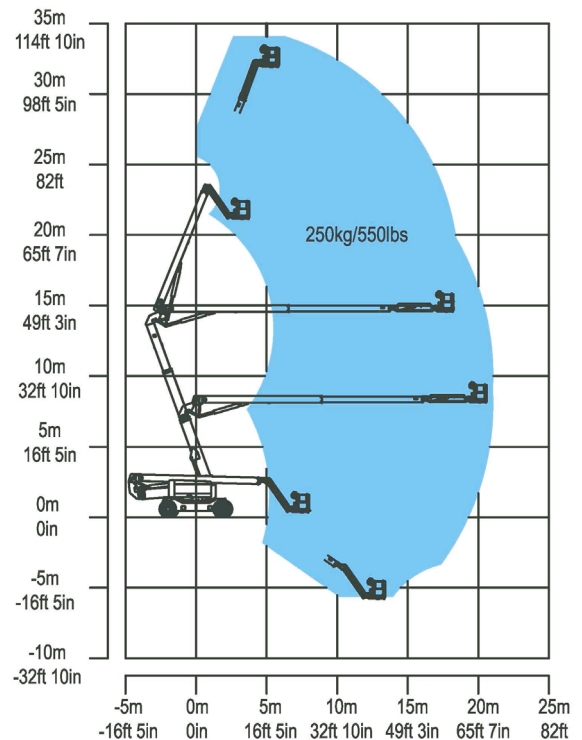
Rental number	982534
Working height (m)	33.85
Platform height (m)	31.85
Up and over height (m)	14.52
Reach (m)	21.17
Platform capacity (kg)	250
Swing (°)	360 continu
Platform rotation (°)	90
Platform size L x B (m)	2.44 x 0.91
Ground clearance (m)	0.42
Turning radius (inside-outside) (m)	7.7/3.3 - 10.8/8.2
Wheel base (m)	3.81
Max. Gradeability (%)	45
Weight (kg)	19,200
Drive Speed (km/h)	5.2
Max. Wind Speed (m/s)	12.5

Dimensions

Length (m)	12.6
Width (m)	2.49
Height (m)	3.10

Energy source

Power	Diesel
Hydraulic tank capacity (l)	200
Fuel tank capacity (l)	200



- ✔ Large reach below ground level
- ✔ Driveable at full height
- ✔ High ground clearance
- ✔ Suitable for outdoor use