



New in the fleet!

Z-62/40 TRAX

Articulating boom lift tracks



Great reach



Tracked chassis



Max. gradeability 45%



New in the fleet!

Z-62/40 TRAX Articulating boom lift tracks

Perfect for outdoor construction and industrial projects, the Z-62/40 Trax articulated boom lift combines rough-terrain capabilities with unparalleled flexibility, allowing you to work effortlessly upwards, sideways, and over obstacles.

Its excellent off-road capabilities are thanks to its crawler chassis and 45% maximum gradient.



Great reach



Tracked chassis



Max. gradeability 45%

Technical data

Z-62/40 Trax

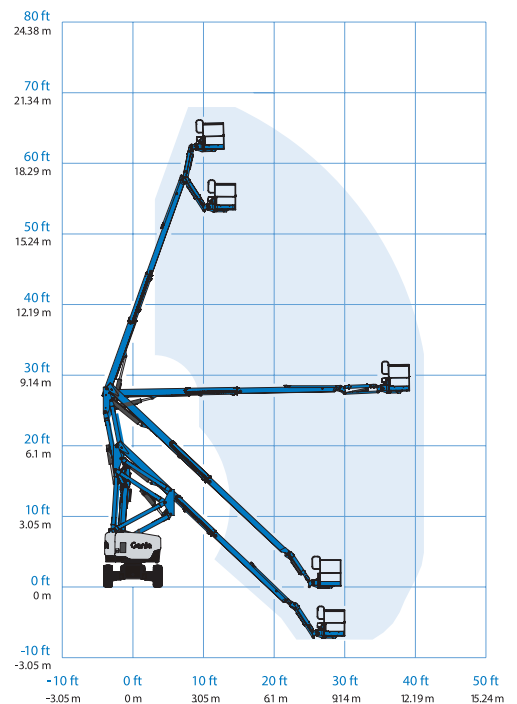
Rental number	982882
Working height (m)	20,87
Platform height (m)	18,87
Reach (m)	12,42
Platform capacity (kg)	227
Vertical jib rotation (°)	135
Turntable rotation (°)	360
Platform dimensions L x B (m)	0,91 m / 0,76 m x 2,44 m / 1,83 m
Ground clearance (m)	0,38
Turning radius (inside/outside) (m)	2,45 m / 5,60 m
Wheelbase (m)	2,49
Gradeability (%)	45
Weight (kg)	12,110
Drive speed stowed (km/h)	4,8
Drive speed raised (km/h)	1,1

Dimensions

Length (m)	9,63
width (m)	2,48
Height (m)	2,72

Energie source

Power	Diesel
Auxiliary power unit (V DC)	12
Hydraulic tank capacity (l)	132
Fuel tank capacity (l)	136



- Zero Tailswing
- Driveable at full height
- Suitable for outdoor use
- Tracked chassis