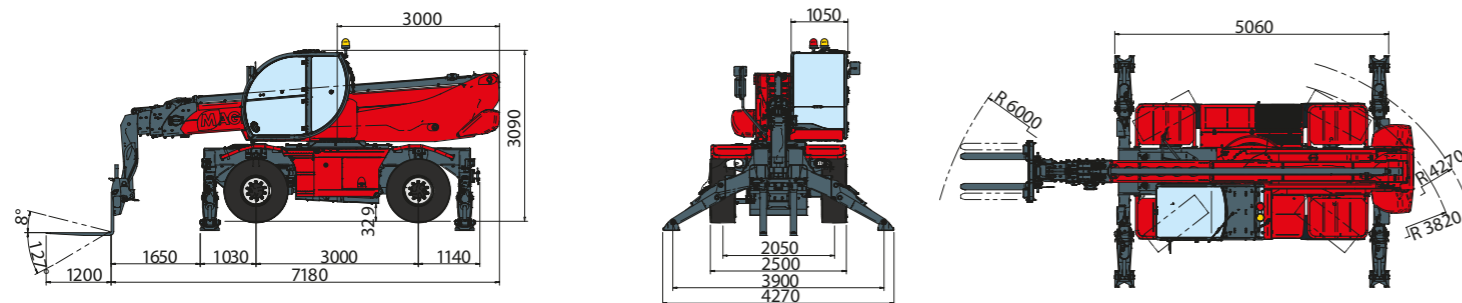


<b>MACHINE MODEL</b>	Rotating telescopic handler	RTH 5.23 Smart			
	Maximum lifting capacity	4.999 kg (center of gravity 500 mm)			
	Maximum lifting height	22,80 m			
<b>ENGINE - DEUTZ</b>	Type	Deutz TCD 3.6 L4 - stage IV	Deutz TCD 3.6 L4 EDG - stage 3A compliant		
	Rated power	100 kW - 134 HP at 2.200 rpm	100 kW - 134 HP at 2.200 rpm		
	Maximum torque	500 Nm at 1.600 rpm	500 Nm at 1.600 rpm		
	Displacement	3,6 l	3,6 l		
	Cylinders	4 in line	4 in line		
	Fuel	Diesel direct injection turbocharged	Diesel direct injection turbocharged		
	Cooling system	Water – intercooler	Water – intercooler		
<b>ENGINE - JCB</b>	Type	JCB ECOMAX stage IV i	JCB DIESELMAX stage 3A		
	Rated power	93 kW - 126 HP to 2.200 rpm	97 kW - 131 HP to 2.200 rpm		
	Maximum torque	550 to 1.500 rpm	532 to 1.500 rpm		
	Displacement	4.399	4.399		
	Cylinders	4	4		
	Fuel	Diesel direct injection turbocharged	Diesel direct injection turbocharged		
Cooling system	Water – intercooler	Water – intercooler			
<b>TRANSMISSION</b>	Type	Hydrostatic			
	Model	Bosch – Rexroth			
	Maximum pressure	500 bar			
	Displacements	Variable displacement pump electronically controlled Variable displacement motor			
<b>AXLES AND BRAKES</b>	Gear box	2 speeds forward-reverse			
	Type	Axles with epicyclic reduction gear			
	Rear axle	Oscillating and steering with hydraulic locking			
	Front axle	Oscillating and steering with automatic levelling +/- 10°			
	Service brake	Hydraulically activated, oil-immersed multi-disc type on each axle			
	Parking brake	Hydraulic with negative action			
	Tyres dimensions	445/65 R 22,5			
<b>PERFORMANCE</b>	Max. travel speed	40 km/h			
	Drawbar pull	66 kN			
	Gradeability	44%			
	Turning radius (end of forks)	6.000 mm			
<b>WEIGHTS</b>	Total unladen	16.830 kg			
	Front axle unladen (boom retracted and lowered)	7.330 Kg			
	Rear axle unladen (boom retracted and lowered)	9.500 kg			
<b>TANK CAPACITIES</b>		Deutz stage IV	Deutz stage3A	JCB stage IV i	JCB stage 3A
	Fuel tank	190 l	190 l	180 l	180 l
	AdBlue	10 l	n.a.	n.a.	n.a.
	Hydraulic oil tank	190 l	190 l	190 l	190 l
	Engine oil tank	8 l	8 l	14 l	14 l
Cooling liquid	20 l	20 l	24 l	24 l	
<b>HYDRAULIC CIRCUIT</b>	Max. operating system pressure	350 bar			
	Circuit type	Load sensing			
	Service pump	Bosch Rexroth – Variable displacement			
	Controls for boom and turret movements	Danfoss – Electroproportional valve SIL 2			
	Controls for stabilizers	Bosch Rexroth – Electro-hydraulics controls			
Movements control	2 joystick Danfoss with two shafts with dead man safety device - Management with CAN bus technology				
<b>CONFORMTY TO STANDARDS</b>	EN 13849: concerning the safety of all controls of the machine EN 13000: concerning the standard of hydraulic cranes EN 280: concerning the standard of aerial platforms FOPS/ROPS 97/68/CE: concerning engine emissions standards				



The data in this brochure are informative and subject to change without notice



Maximum lifting height: 22,80 m  
Maximum reach: 19,50 m  
Electronically controlled hydrostatic transmission  
Automatic levelling device  
Pivoting stabilizers

tracce.com

REV05

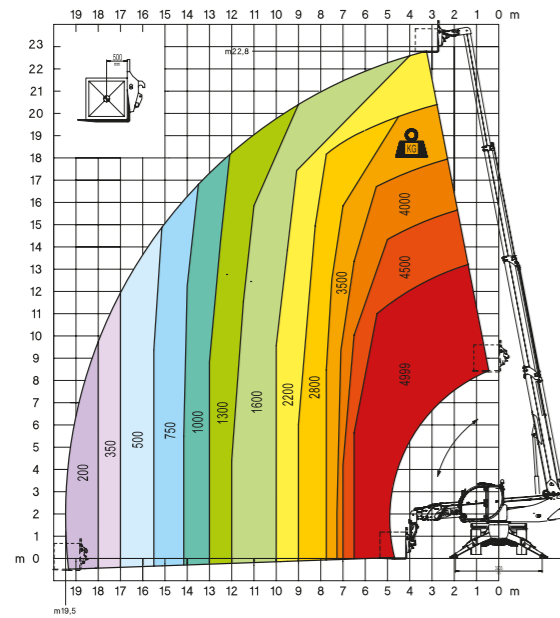
# RTH5.23 Smart

**Magni Telescopic Handlers srl**

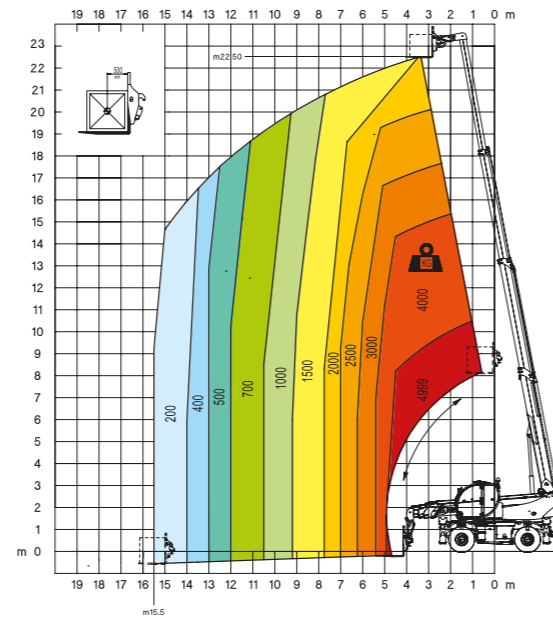
Via Magellano, 22 - 41013 Castelfranco Emilia, Modena, Italia - Tel: +39 059 8630811 - Fax: +39 059 8638012

[commerciale@magnith.com](mailto:commerciale@magnith.com) - [www.magnith.com](http://www.magnith.com)

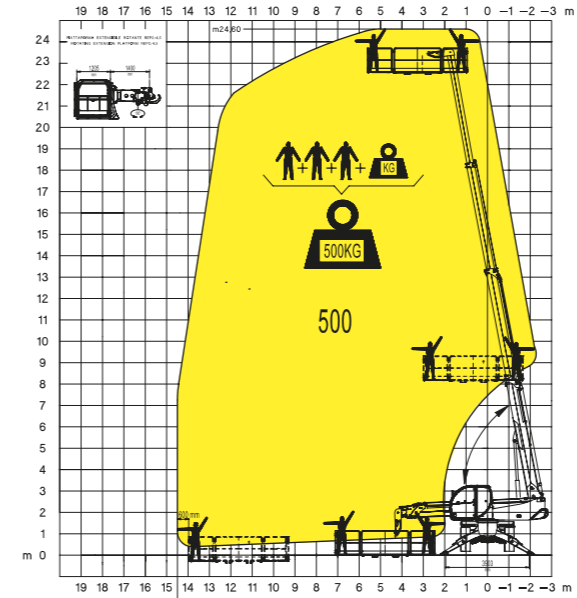
360° fully extended stabilizers load chart with forks



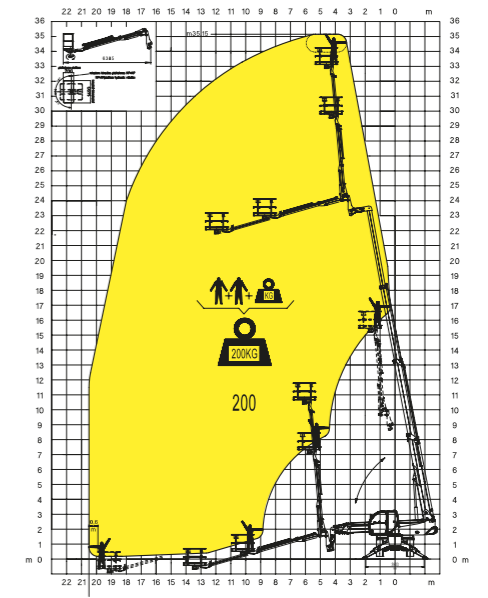
Frontal position load chart on tyres with forks



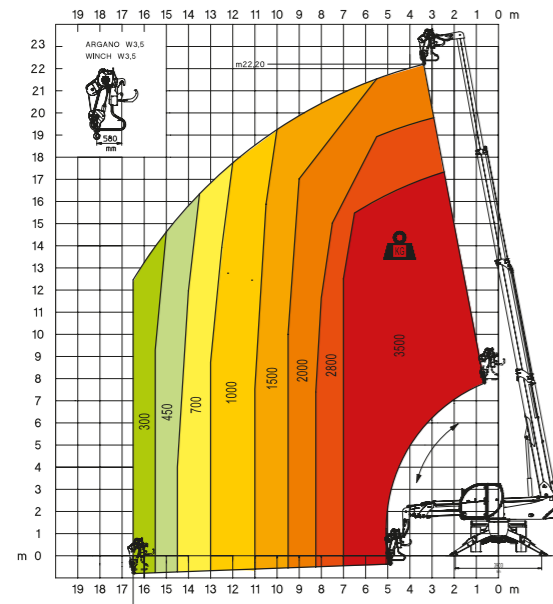
**REP 2-4,5**  
Rotating extendable men platform 500kg



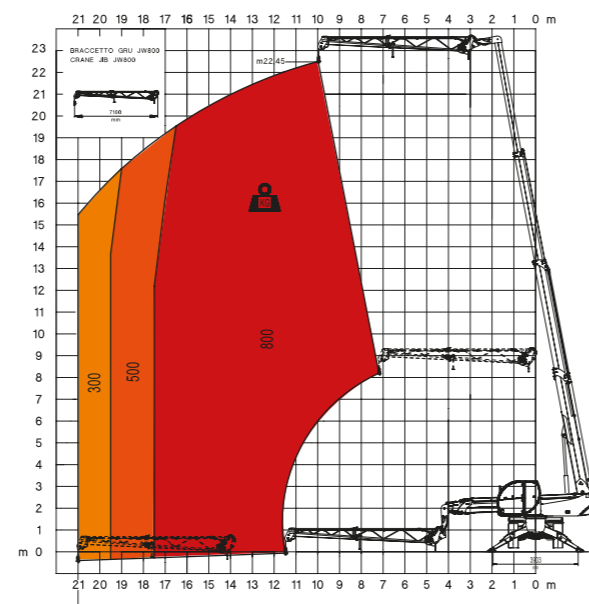
**TP 2.10**  
Telescopic Platform TP 2.10



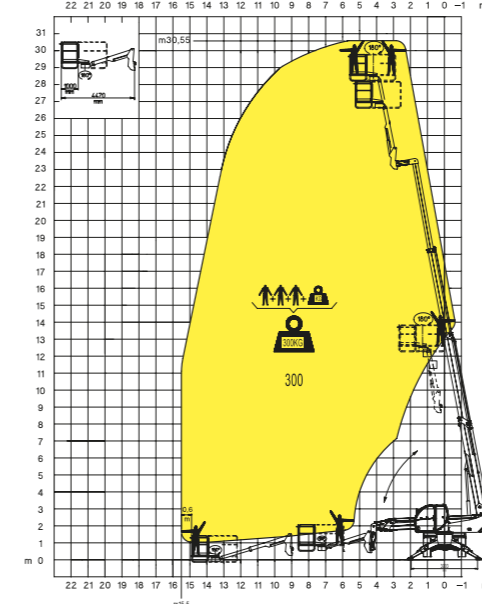
**W 3,5**  
winch 3,5 ton



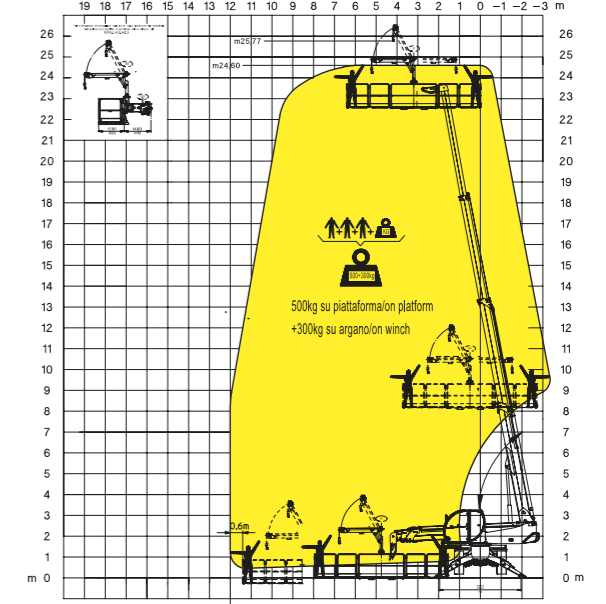
**JW 800**  
Jib winch 800



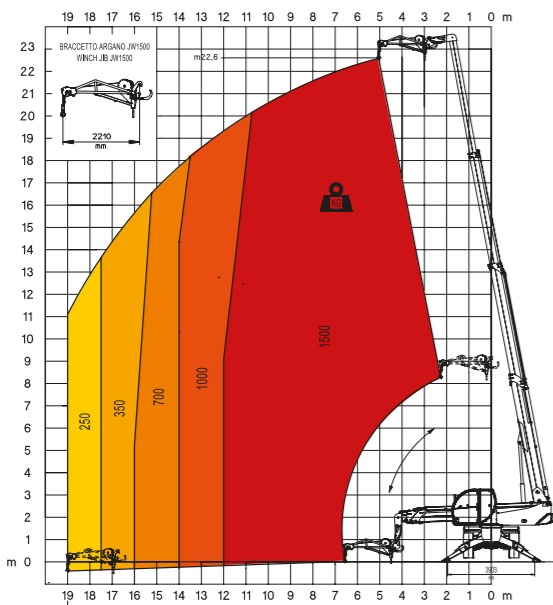
**TP**  
Telescopic pivoting men platform with 180° rotation



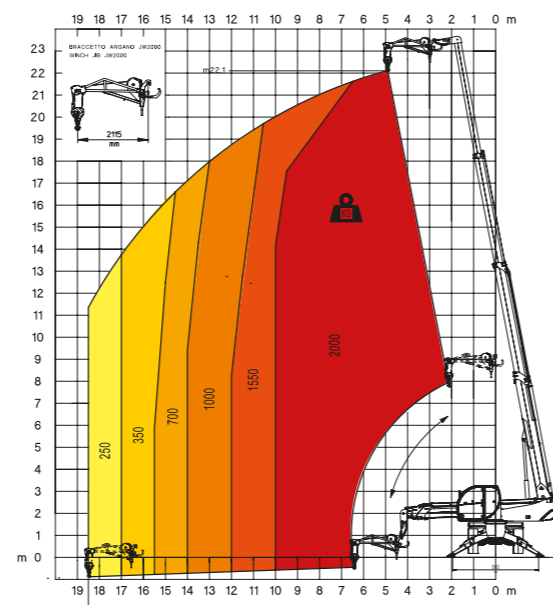
**REP 2-6,5 W0,3**  
Platform 6,5m 500kg with winch 300kg



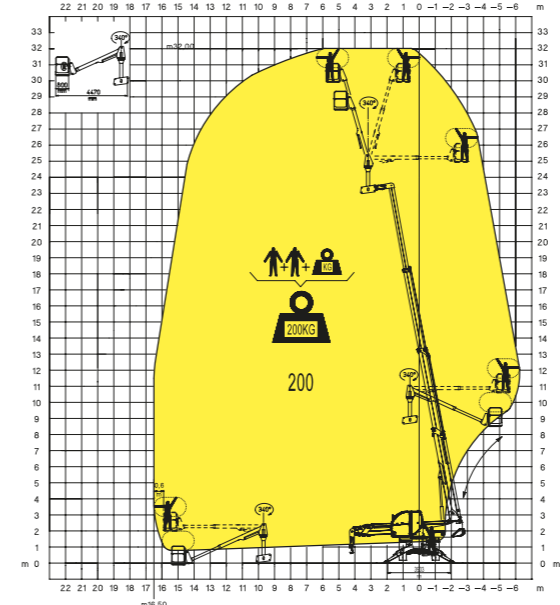
**JW 1500**  
Jib winch 1.500



**JW 2000**  
Jib winch 2.000



**TP O-U**  
Telescopic pivoting men platform over-under with 340° rotation



**TP O-U**  
Telescopic pivoting men platform over-under with 340° rotation

