

MACHINE MODEL	Rotating telescopic handler	RTH 5.25 Smart			
	Maximum lifting capacity	4.999 kg (center of gravity 500 mm)			
	Maximum lifting height	24,60 m			
ENGINE - DEUTZ	Type	Deutz TCD 3.6 L4 Stage IV	Deutz TCD 3.6 L4 EDG - stage 3A compliant		
	Rated power	100 kW - 134 HP at 2.200 rpm	100 kW - 134 HP at 2.200 rpm		
	Maximum torque	500 Nm at 1.600 rpm	500 Nm at 1.600 rpm		
	Displacement	3,6 l	3,6 l		
	Cylinders	4 in line	4 in line		
	Fuel	Diesel direct injection turbocharged	Diesel direct injection turbocharged		
	Cooling system	Water – intercooler	Water – intercooler		
ENGINE - JCB	Type	JCB ECOMAX stage IV i	JCB DIESELMAX stage 3A		
	Rated power	93 kW - 126 HP to 2.200 rpm	97 kW - 131 HP to 2.200 rpm		
	Maximum torque	550 to 1.500 rpm	532 to 1.500 rpm		
	Displacement	4.399	4.399		
	Cylinders	4	4		
	Fuel	Diesel direct injection turbocharged	Diesel direct injection turbocharged		
Cooling system	Water – intercooler	Water – intercooler			
TRANSMISSION	Type	Hydrostatic			
	Model	Bosch – Rexroth			
	Maximum pressure	500 bar			
	Displacements	Variable displacement pump electronically controlled Variable displacement motor			
AXLES AND BRAKES	Gear box	2 speeds forward-reverse			
	Type	Axles with epicyclic reduction gear			
	Rear axle	Oscillating and steering with hydraulic locking			
	Front axle	Oscillating and steering with automatic levelling +/- 10°			
	Service brake	Hydraulically activated, oil-immersed multi-disc type on each axle			
	Parking brake	Hydraulic with negative action			
	Tyres dimensions	445/65 R 22,5			
PERFORMANCE	Max. travel speed	40 km/h			
	Drawbar pull	66 kN			
	Gradeability	41%			
	Turning radius (end of forks)	6.410 mm			
WEIGHTS	Total unladen	17.230 kg			
	Front axle unladen (boom retracted and lowered)	7.600 Kg			
	Rear axle unladen (boom retracted and lowered)	9.630 kg			
TANK CAPACITIES		Deutz stage IV	Deutz stage3A	JCB stage IV i	JCB stage 3A
	Fuel tank	180 l	180 l	180 l	180 l
	AdBlue	10 l	n.a.	n.a.	n.a.
	Hydraulic oil tank	190 l	190 l	190 l	190 l
	Engine oil tank	8 l	8 l	14 l	14 l
Cooling liquid	20 l	20 l	24 l	24 l	
HYDRAULIC CIRCUIT	Max. operating system pressure	350 bar			
	Circuit type	Load sensing			
	Service pump	Bosch Rexroth – Variable displacement			
	Controls for boom and turret movements	Danfoss – Electroproportional valve SIL 2			
	Controls for stabilizers	Bosch Rexroth – Electro-hydraulics controls			
Movements control	2 joystick Danfoss with two shafts with dead man safety device - Management with CAN bus technology				
CONFORMTY TO STANDARDS	EN 13849: concerning the safety of all controls of the machine EN 13000: concerning the standard of hydraulic cranes EN 280: concerning the standard of aerial platforms FOPS/ROPS 97/68/CE: concerning engine emissions standards				

The data in this brochure are informative and subject to change without notice



Maximum lifting height: 24,60 m
 Maximum reach: 19,00 m
 Electronically controlled hydrostatic transmission
 Automatic levelling device
 Pivoting stabilizers

tracee.com

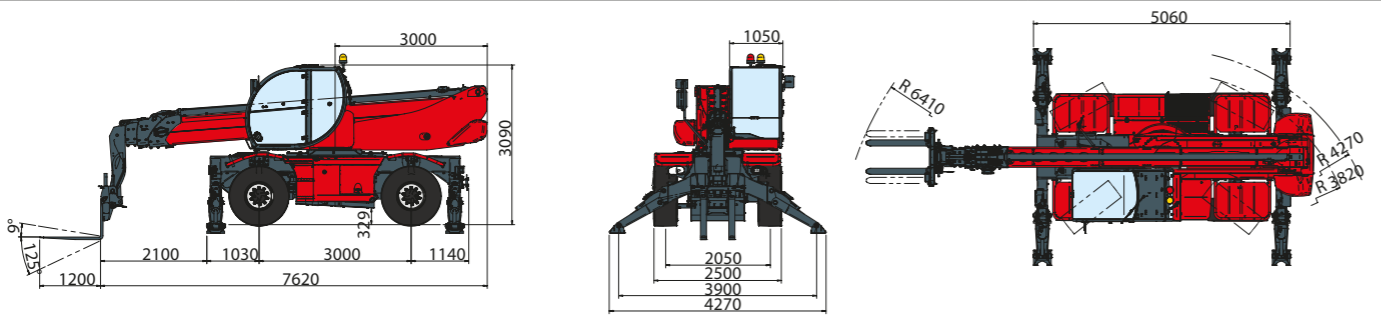
REV05

RTH5.25 Smart

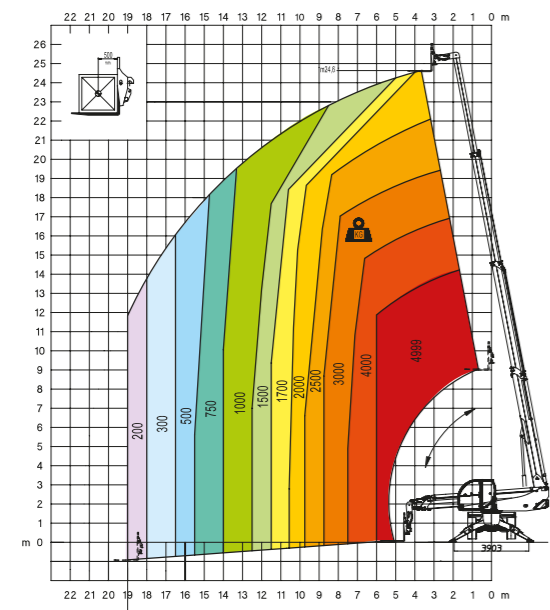
Magni Telescopic Handlers srl

Via Magellano, 22 - 41013 Castelfranco Emilia, Modena, Italia - Tel: +39 059 8630811 - Fax: +39 059 8638012

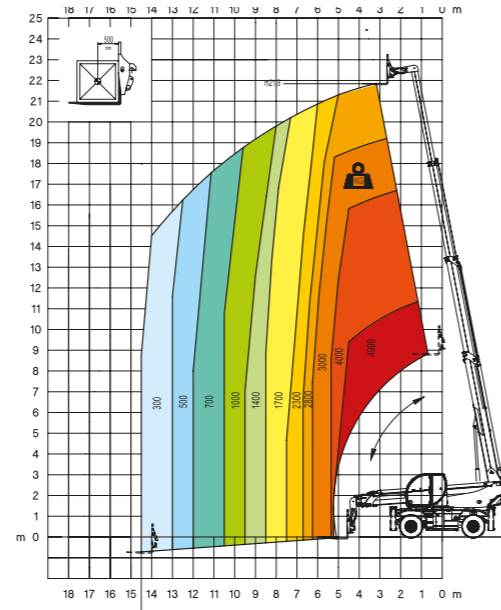
commerciale@magnith.com - www.magnith.com



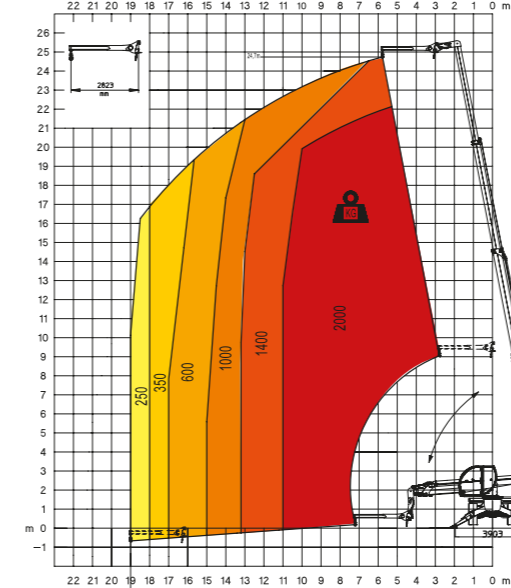
360° fully extended stabilizers load chart with forks



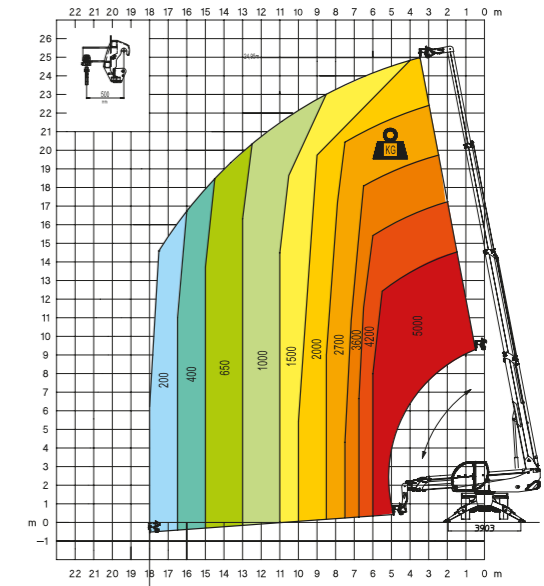
Frontal position load chart on tyres with forks



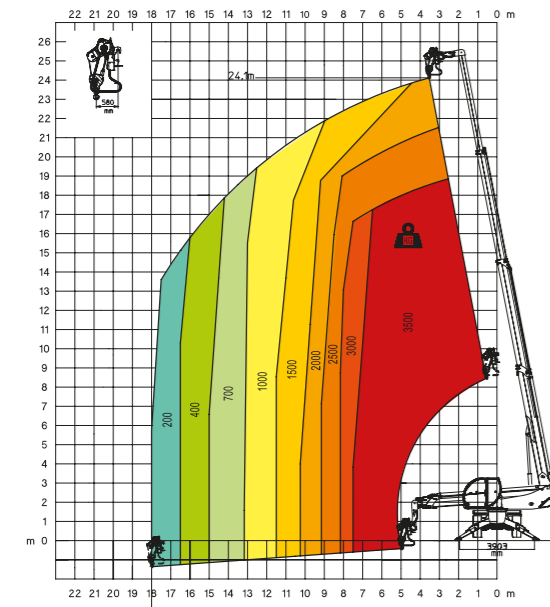
J 2000
Jib 2.000 Kg



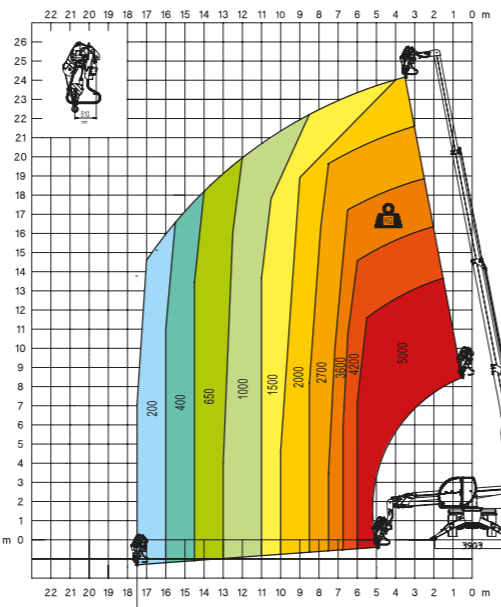
H 5
5 Ton Hook



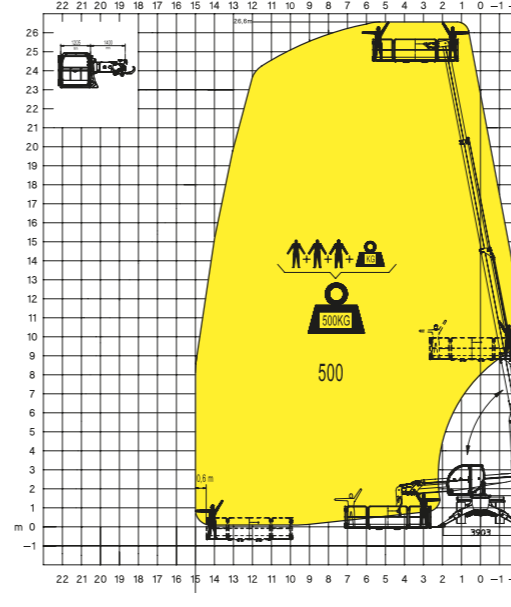
W 3,5
winch 3,5 ton



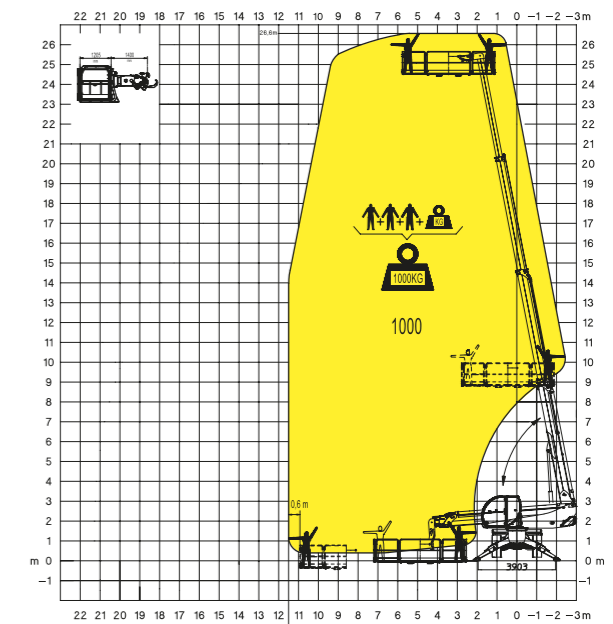
W 5
winch 5 Ton



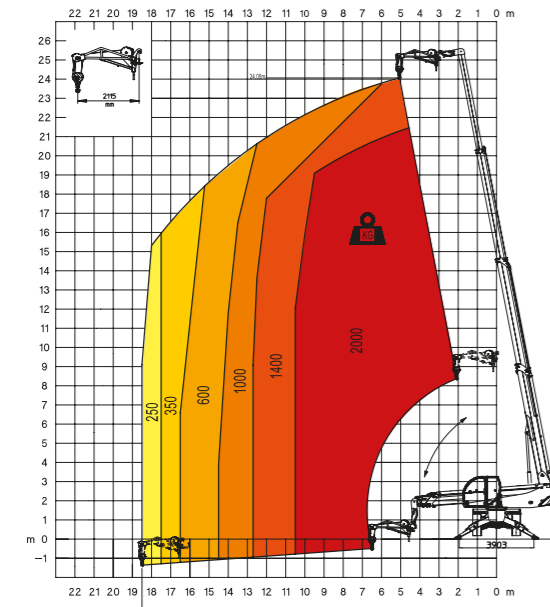
REP 2-4,5
Rotating extendable men platform 500kg



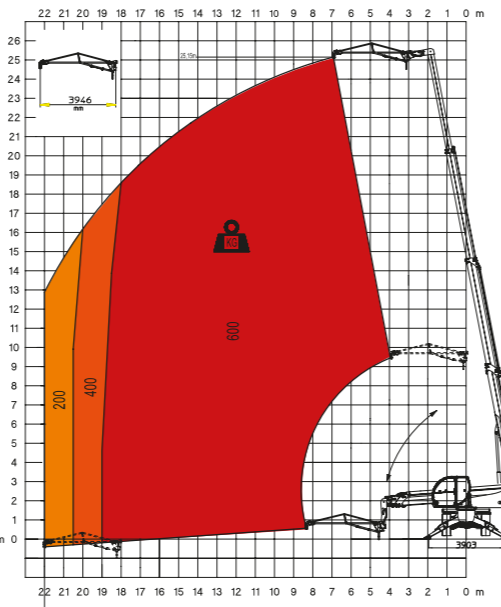
REP 10.2-4,7
Rotating extendable men platform 1.000kg



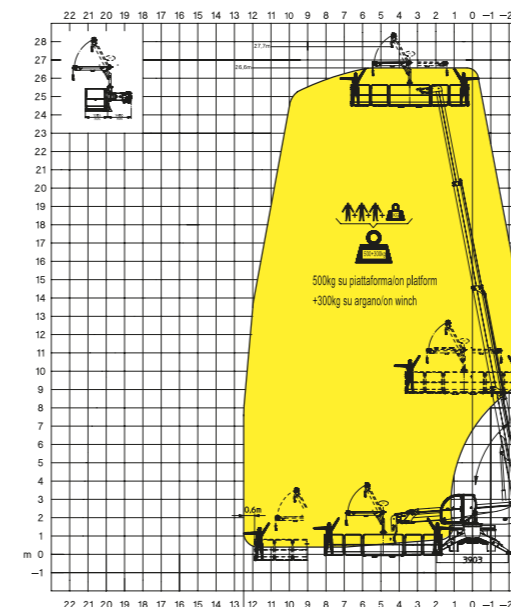
JW 2000
Jib winch 2.000



J 600
Jib 600 Kg



REP 2-6,5 W0,3
Platform 6,5m 500kg with winch 300kg



REP 8.2-4,7 W0,3
Platform 4,7m 800kg with winch 300kg

