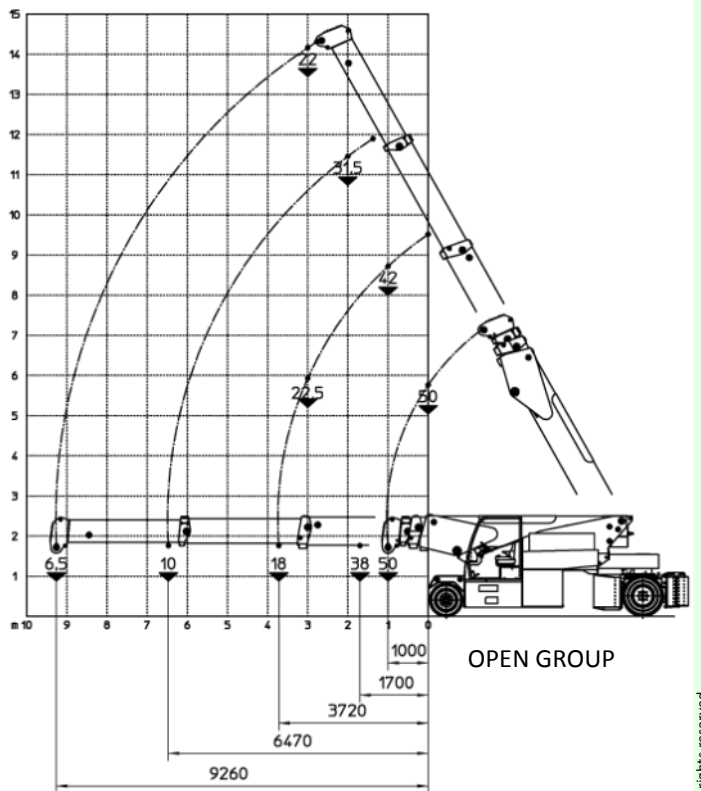
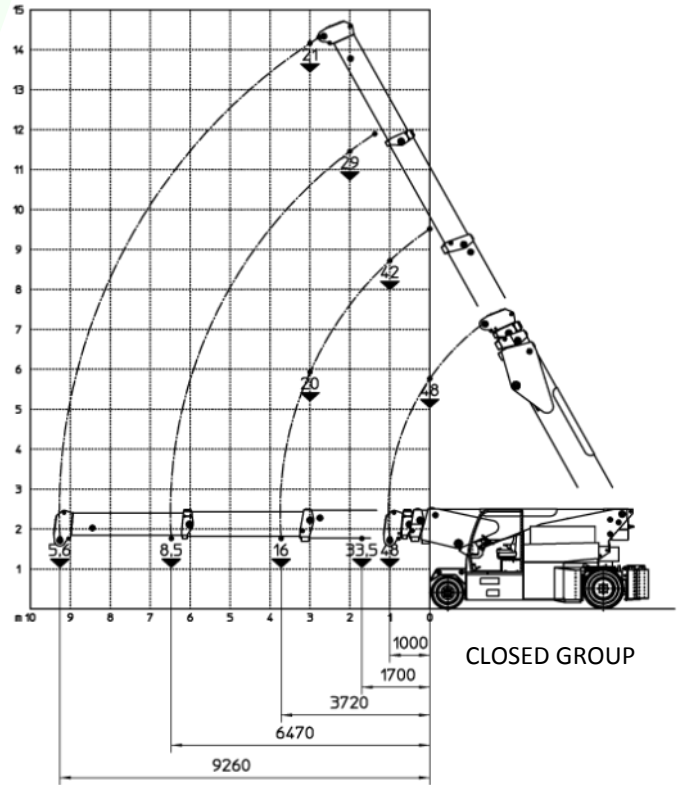




Made in Italy

# MC 500

## Max capacity 50 t



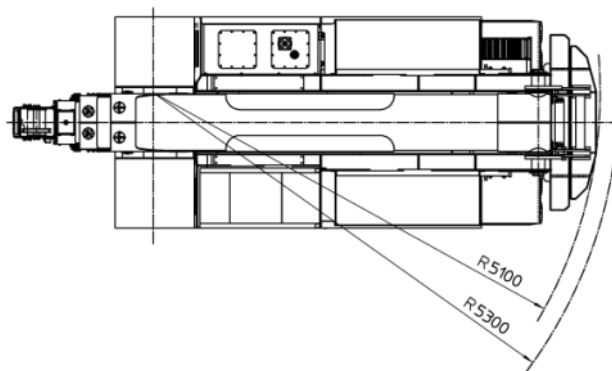
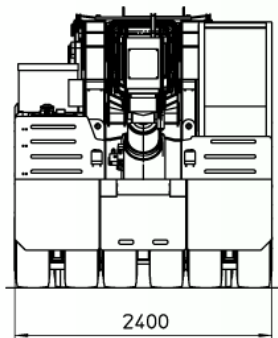
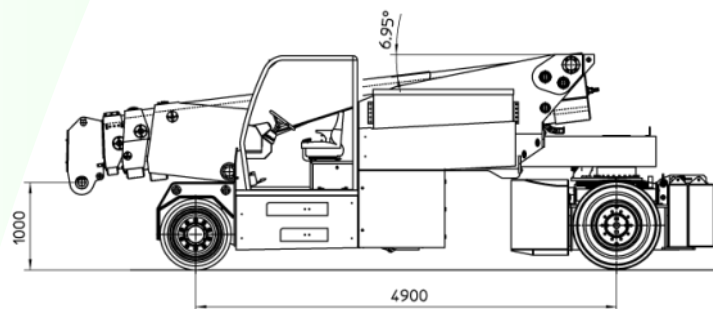
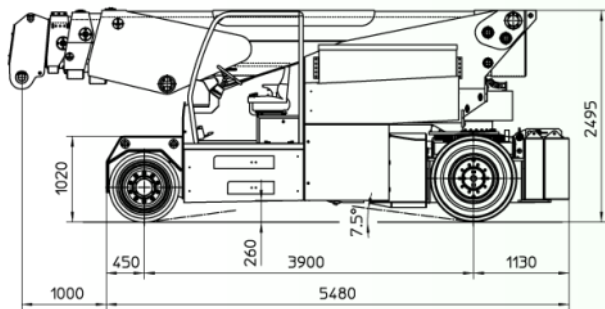
|  |   |
|--|---|
| <b>MODEL</b>                                     | <b>MC 500</b>   |
| CRANE CLASSIFICATION ACCORDING TO UNI ISO 4301-1 | <b>A3</b>   |
| REFERENCE STANDARDS                              | 2006/42 CE - 2004/108 CE<br>I.S.P.E.S.L.<br>DIN 15018 (1,3) - 15019 (1)<br>Class H2 B3<br>ANSI B30.5 - 2007<br>And subsequent modifications |
| TRACTION   | Electric  |
| BOOM ACTIVATION                                  | Hydraulic   |
| POWER TYPE                                       | Electric battery  |
| MAX. CAPACITY (kg)                               | 50000   |
| TOTAL WEIGHT (kg)                                | 38000   |
| BOOM ANGLE TOPSIDE (°)                           | 60  |
| BOOM ANGLE DOWNSIDE (°)                          | -7  |



UNI EN ISO 9001:2008

# MC 500 Max capacity 50 t

PATENT PENDING



- FRAME:** JMG designed and manufactured, box type, torsion resistant design of high strength structural steel.
- BOOM:** Made of moulded and welded quality steel plate, comprised of a base unit, and three hydraulic extensions (proportional telescopic boom).
- TRACTION MOTOR:** Electric motor 2x24 kW, 96V AC, Insulation class K1H.
- MOTOR PUMP:** Electric motor 1x35 kW 96V AC, 1x16 kW 96V AC, Insulation class K1H.
- POWER DRIVE:** Electronic speed control, MOSFET type.
- BATTERY:** 96 V - 1395 Ah.
- TRANSMISSION:** Rear axle through epicyclic reduction gears.
- WHEELS:** Front axle: 6 superelastic wheels 355x50-20"  
Rear axle: 4 superelastic wheels 10.00-20"
- BRAKING:** Service brake: hydraulic pedal operated.  
Parking and emergency brake: hydraulic with automatic insertion electric control.
- STEERING:** On the rear wheels by hydraulic motor controlled by hydrostatic power steering with load sensing priority valve.  
The supply of the hydrostatic system is guaranteed by the oil dynamic system of the crane.
- HYDRAULIC SYSTEM:** Powered by a 35 kW motor pump. Actuators controlled through electro-proportional distributor with electronic joystick. Filter and safety valve. 22 MPa max pressure.
- SAFETY DEVICES:** Electronic load moment indicator.

## OPTIONAL EQUIPMENT (at extra charge)

Hydraulic winch - Manual Jib - Hydraulic Jib - Non-marking wheels - Man basket - Hydraulic chain hoist  
Cable remote control - Radio remote control - Hydraulic forks

**JMG CRANES S.R.L.**

Via Sito Nuovo, 16 - 29010 SARMATO (PC) - ITALY  
Tel. +39 0523 887297 - E-mail sales@jmgcranes.it  
www.jmgcranes.it



UNI EN ISO 9001:2008