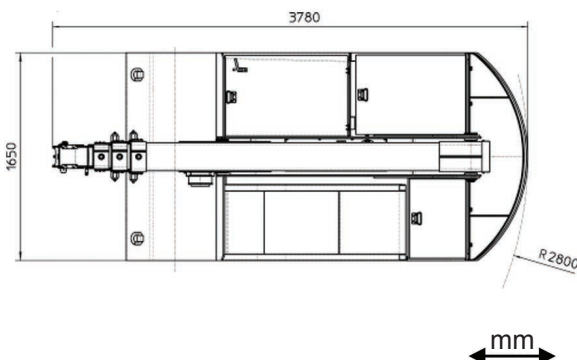
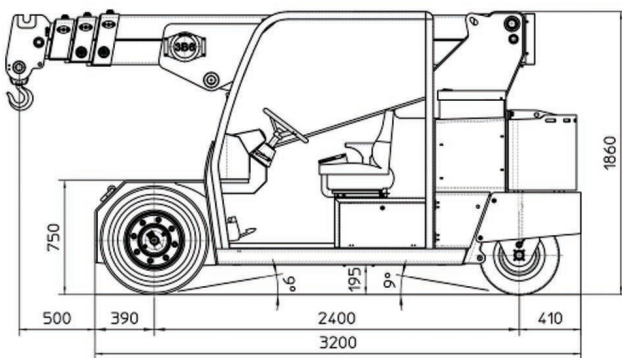
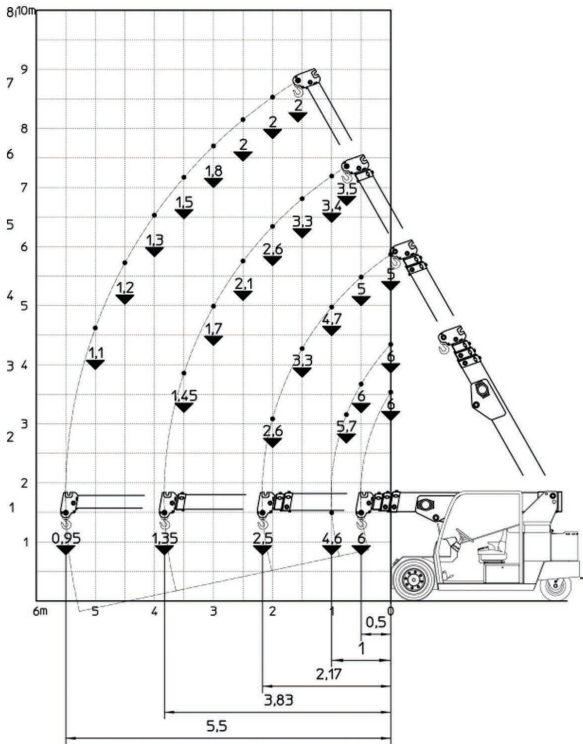


MC60 6 t



- FRAME:** JMG designed and manufactured, box type, torsion resistant design of high strength structural steel.
- BOOM:** Made of moulded and welded quality steel plate, comprised of a base unit, and three hydraulic extensions
- TRACTION MOTOR:** Electric motor 2x7,5 kW 72 V AC, insulation class H
- MOTOR PUMP:** Electric motor 12 kW 72 V AC, insulation class H
- BATTERY:** 72 V 575 Ah
- POWER DRIVE:** Electronic speed control, MOSFET type
- TRANSMISSION:** Front axle through geared reducer
- WHEELS:** Front: 2 Superelastic 250-15"
Rear: 2 Superelastic 21x8-9"
- BRAKING:** Service brake: hydraulic pedal operated on all wheels. Parking and emergency brake: hydraulic with automatic control on front wheels
- STEERING:** On the rear wheels by hydraulic motor controlled by hydrostatic power steering with load sensing priority valve. The supply of the hydrostatic system is guaranteed by the oil dynamic system of the crane
- HYDRAULIC SYSTEM:** Powered by a 12 kW silenced gear pump. Actuators controlled by electro-proportional distributor with electronic joystick. Filter and safety valve. 22 MPa max. working pressure
- SAFETY DEVICES:** Electronic load moment indicator
- OPTIONAL EQUIPMENT:** Hydraulic winch - Jib - Non-marking wheels (at extra charge)
- Man basket - Hydraulic chain hoist - Cable remote control - Radio remote control - Fork attachment

CRANE CLASSIFICATION ACCORDING TO UNI ISO 4301-1	A3
EU STANDARD CE	2006/42 CE MD 2004/108 CE EMC 2006/95 CE LVD 2000/14/CE And subsequent modifications
REFERENCE STANDARDS	EN13000:2010 / UNI ISO 4301-2:2011 ANSI/ASME B30.5 - 2011 And subsequent modifications
TRACTION	Electric
BOOM ACTIVATION	Hydraulic
POWER TYPE	Electric battery
MAX. CAPACITY (kg)	6000
TOTAL WEIGHT (kg)	6500
BOOM ANGLE TOPSIDE (°)	60
BOOM ANGLE DOWNSIDE (°)	-15