



# LC1385B Crawler Crane

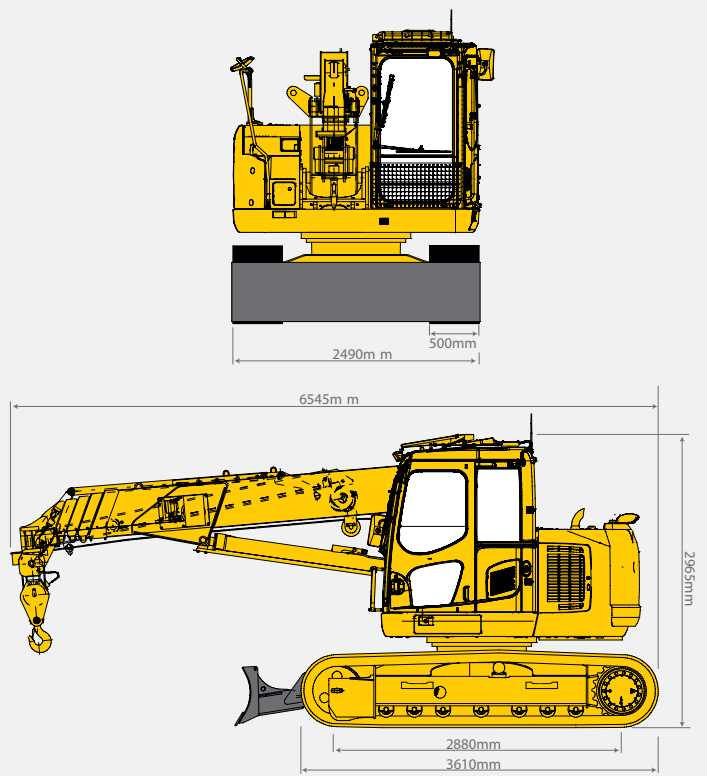
## Specifications

Capacity	Maximum	6.0 t x 2.6m
Working Radius	Maximum	16.10m x 430kg
Lifting Height	Maximum	16.70m x 2600 kg (22m x 820kg with Fly-Jib)
Dimensions	LC1385B	6545mm x 2490mm x 2965mm
Weight	LC1385B	15640kg (15850kg with Fly-Jib)
	Hook Block Weight	90kg
Hook Speed	Two Speed	28/41m / min. (4 falls, 4th layer)
Single Line Speed	Two Speed	112/164m / min (4 layers)
Hoist Rope	Standard	IWRC 6xFi (29) Ø 10mm x 115m
Telescopic System	Boom length	4.745 m - 16.265 m
	Telescoping speed	11.52 m / 26 sec
	Boom type	Fully automatic 5 section pentagonal telescopic boom
Boom Hoist System	Hoist angle / speed	-5° to 80° / 18 sec
Slew System	Slew angle / speed	360° continuous / 3.4 rpm
Drive	Type	Independent steering controls, hydraulic piston motor with built in automatic brake, planet reduction gears, sprocket and crawler.
Traction speed	Low	2.9 km/h
	High	5.1 km/h
	Gradability	34°
	Ground length x width	2880mm x 500mm (Track dimensions)
	Ground pressure	0.54 kgf / cm <sup>2</sup> 0.55 kgf / cm <sup>2</sup> (With Fly-Jib )
Engine	Model	KOMATSU SAA4D95LE-5
	Type	4 cylinder diesel water cooled direct injection
	Rated output	68.4 kW / 2,200 rpm
	Starting method	Electric
	Fuel tank capacity	Diesel/195L
Standard Equipment	Moment limiter, steel tracks, overwind protection, hydraulic safety valves, level, EMO switch, LED working status lamp, working light, hour meter, tilt alarm, air conditioning, 4-fall / 2-fall hook block, blade with interlock system, rear view camera, data logger.	
Optional Equipment	Single fall hook, rubber pads (black), fly-jib.	

## Maximum Reach Below Ground Level

Four Fall	Two Fall	Single Fall
24.50m	50.50m	103.50m

## Dimensions



## Total rated load

4.745m boom		7.625m boom		10.505m boom		13.385m boom		16.265m boom	
Working radius (m)	Total rated load (kg)	Working radius (m)	Total rated load (kg)	Working radius (m)	Total rated load (kg)	Working radius (m)	Total rated load (kg)	Working radius (m)	Total rated load (kg)
2	6000	2	6000	2	3000	2	N/A	2	N/A
2.5	6000	2.5	6000	2.5	3000	2.5	3000	2.5	N/A
3	5250	3	5260	3	3000	3	3000	3	2600
3.5	4450	3.5	4460	3.5	3000	3.5	3000	3.5	2600
4	3830	4	3820	4	3000	4	3000	4	2600
4.5	3320	4.5	3310	4.5	3000	4.5	3000	4.5	2600
		5	2880	5	2710	5	2640	5	2600
		6	2210	6	2140	6	2100	6	2080
		7	1720	7	1720	7	1710	7	1710
				8	1400	8	1430	8	1430
				9	1150	9	1200	9	1210
				10	940	10	1020	10	1040
						11	880	11	890
						12	750	12	770
						13	650	13	670
								14	580
								15	500
								16	440
								16.1	430

## Pick & Carry Duties

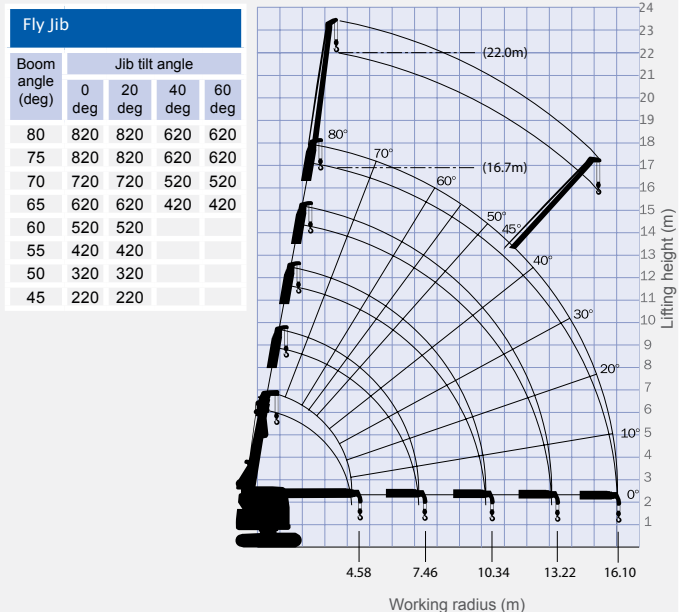
4.745m boom		7.625m boom		10.505m boom	
Working radius (m)	Total rated load (kg)	Working radius (m)	Total rated load (kg)	Working radius (m)	Total rated load (kg)
2	2000	2	2000	2	1500
2.5	2000	2.5	2000	2.5	1500
3	2000	3	2000	3	1500
3.5	2000	3.5	2000	3.5	1500
4	1915	4	1910	4	1500
4.5	1660	4.5	1655	4.5	1500
		5	1440	5	1355
		5.5	1260	5.5	1200
		6	1105	6	1070
		7	860	7	860
				7.5	775
				8	700
				8.5	635
				9	575
				10	470

## Pick & Carry duties are available at boom lengths up to 10.505 metres.

The Total Rated Load Charts are based on the actual working radius including boom deflection. The weight of the hook (standard 4 fall - 90kg) must be included as part of the load shown in the Total Rated Load Charts.

When using two fall or single fall hooks, use the appropriate four fall Total Rated Load Chart above but with a maximum load of: Two Fall - 3000kg, Single Fall - 1500kg.

## Working Range Diagram & Fly Jib total rated load chart



The Working Range Chart does not take into account boom deflection under load.