

Multi-Tool

Wacker Neuson Skid Steer Loaders

501s • 701s • 701sp

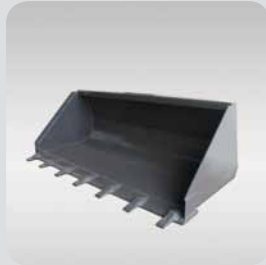
501s
701s
701s



**WACKER
NEUSON**

Your system machine of the future. Programmed for versatility.

excavating bucket
toothed



light load bucket



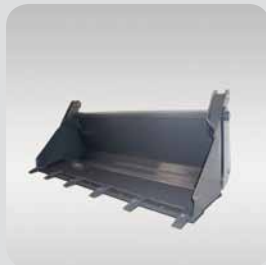
universal bucket



4-in-1-bucket



4-in-1-bucket
toothed



sweeper bucket



clamp bucket



pallet fork

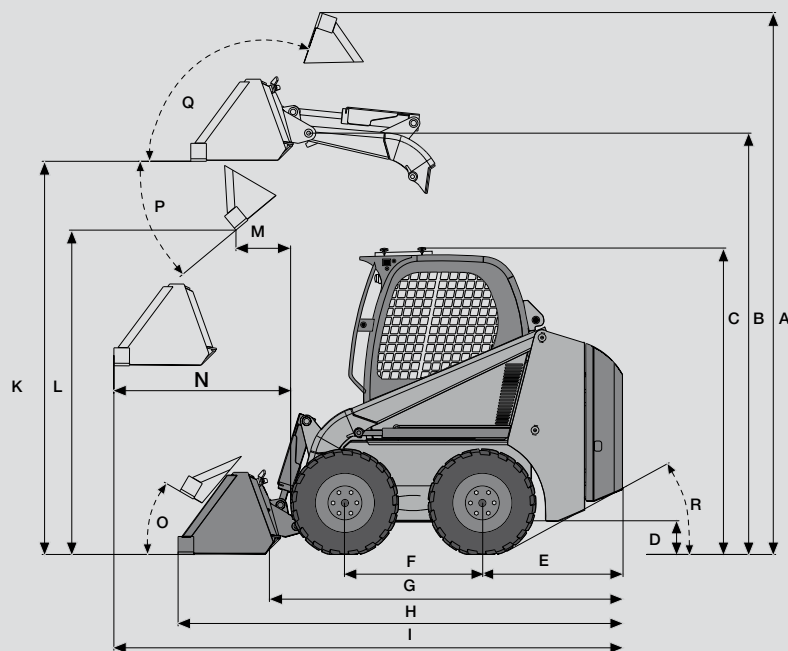


clamp forklift

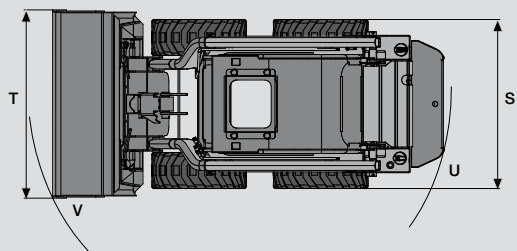


The Skid Steer Loader as a system machine:

- Boosting value with more application flexibility.
- Pays off with fast amortisation.
- Short service and maintenance times.
- High compatibility for all leading manufacturer attachments and tools.
- Easy to operate, safe to drive.







501
701



DIMENSIONS

	501s	701s · 701sp
A Max. height	3475 mm	3620 mm
B Height to bucket swivel-joint	2700 mm	2860 mm
C Cabin height	1930 mm	1947 mm
D Ground clearance	225 mm	252 mm
E Tail projection (from rear axle)	898 mm	1056 mm
F Wheelbase	885 mm	890 mm
G Total length without attachments	2263 mm	2440 mm
H Total length with standard bucket	2860 mm	3060 mm
I Max. vehicle length	3258 mm	3517 mm
K Bucket height (in highest position)	2522 mm	2660 mm
L Max. dumping height	2122 mm	2325 mm
M Reach	424 mm	516 mm
N Max. reach (with horizontal arm position)	1136 mm	1173 mm
O Tipping angle on the ground	30 °	29 °
P Tipping angle	40 °	35 °
Q Tipping angle	105 °	105 °
R Gradient	29 °	27 °
S Vehicle width (with standard tyres 27 x 8,5 - 15 · 10 x 16,5)	1230 mm	1475 mm
T Bucket width	1270/1370 mm	1520 mm
U Turn radius – tail	1381 mm	1520 mm
V Turn radius – front	1656 mm	1771 mm



 OPERATIONAL DATA	501s	701s • 701sp
Operational weight*	1810 kg	2400 kg • 2450 kg
Working load	510 kg	680 kg
Tipping load	1020 kg	1360 kg
Bucket content levelled	0,21 m ³	0,29 m ³
Bucket content heaped	0,26 m ³	0,36 m ³
 ENGINE		
Make/type	YANMAR 3TNV88	YANMAR 4TNV88 • YANMAR 4TNV84 Turbo
Model	water cooled, 3-cylinder diesel engine	water cooled 4-cylinder diesel engine
Performance to ISO	27 kW (36 HP)	34 kW (46 HP) • 39 kW (52 HP)
Capacity	1642 cm ³	2189 cm ³ • 1998 cm ³
Operating speed	3000 min ⁻¹	2800 min ⁻¹
Battery	12 V, 71 Ah	12 V, 88 Ah
Diesel tank volumes	45 l	52 l
 HYDRAULIKSYSTEM		
Pumps	gear pumps	gear pumps
Work hydraulics operational pressure	185 bar	210 bar
Work hydraulics hydraulic output	42 l/min	62 l/min • –
Work hydraulics hydraulic output „Powerflow“	–	– • 115 l/min
Hydraulic oil cooler	combi-cooler, standard feature	combi-cooler, standard feature
Hydraulic tank content	45 l	55 l
 TRAVEL DRIVE		
Pumps	Axial piston-variable displacement pump	Axial piston-variable displacement pump
Travel speeds	10,5 km/h	12 km/h
Standard tyres	27 x 8,5 - 15	10 x 16,5
Drive concept	Quattrostatic® = 4 separate travel motors/gear units	Quattrostatic® = 4 separate travel motors/gear units
Brake	hydraulic parking brake	hydraulic parking brake
NOISE EMISSIONS		
Noise level (LWA) as per 2000/14/EC	101 dB(A)	101 dB(A)

* incl. standard bucket, full tank and driver (80 kg).

STANDARD EQUIPMENT

501 s

ENGINE

Water cooled 3-cylinder YANMAR diesel engine

HYDRAULICS

Arm floating position
 Hydraulic parking brake
 Frontal auxiliary hydraulics
 Combi-cooler

CABINS

ROPS/FOPS Level 1, with 12V power socket, interior lighting plus luggage rack and lock-up document box.
Control with a big instrument selection
Adjustable driver's seat
Unrolling safety belt
Safety shackle
Load hooks
Lexan safety roof

TRAVEL DRIVE

Quattrostatic®: 4 separate travel motors driving the wheels via reduction gear unit.
Advantages
 - Travel drive without chains
 - No chain boxes giving greatest possible chassis clearance
 - No maintenance of travel drive

FURTHER ADVANTAGES

Universal fast change system

OPTIONAL FEATURES

501 s

Airboss® tyres
Work floodlight at rear
BP-Biohyd SE 46
Panolin bio oil
Anti-theft system
Turning light
Single point lifting unit.
FOPS roof level 2
Gas pedal
Interior rear mirror
Comfortable seat
Reverse warning signal
Mirror package (mirrors right and left)
Bucket parallel guide
 (can be switched for up movements)
Hose burst protection
Narrow tyre (width with narrow bucket 1190 mm)
Security 24 (2000 h) Warranty extension to 24 months or 2000 operation hours
Security 36 (3000 h) Warranty extension to 6 months or 3000 operation hours
Side windows
Special RAL paintwork (colour only for yellow parts)
Special non-RAL paintwork (colour only for yellow parts)
Road permit package
Extensive attachments range
Protection against vandalism
Hydraulic controls (hydraulic controlled travel drive and work hydraulics incl. load limit regulation of the tandem pump; choice of ISO controls or two-hand controls (H-controls))

701 s • 701 sp

ENGINE

S Water cooled 4-cylinder YANMAR diesel engine
SP Water cooled 4-cylinder YANMAR diesel engine with turbo-charging

HYDRAULICS

Hydraulic controlled travel drive and work hydraulics
 Tandem pump load limit regulation
 Arm floating position
 Hydraulic parking brake
 Frontal auxiliary hydraulics
 combi-cooler
SP „Powerflow“
 Increased oil flow in the auxiliary hydraulic system (2 auxiliary hydraulics connections + 3 "Powerflow"-connection points)

CABINS

ROPS/FOPS Level 1, with 12V power socket, interior lighting plus luggage rack and lock-up document box
Dashboard with extensive instrumentation display
Adjustable seat designed for added comfort
Adjustable armrest
Unrolling safety belt
Safety shackle
Interior rear mirror
Load hooks
Lexan safety roof

TRAVEL DRIVE

Quattrostatic®: 4 separate travel motors driving the wheels via reduction gear unit.
Advantages
 - Travel drive without chains
 - No chain boxes giving greatest possible chassis clearance
 - No maintenance travel drive

FURTHER ADVANTAGES

Bucket parallel guide (can be switched for upwards movement)
Gas pedal
Universal fast change system

701 s • 701 sp

Airboss®-tyres
Work floodlight at rear
BP-Biohyd SE 46
Panolin bio oil
Anti-theft system
Turning light
Single point lifting unit.
FOPS roof level 2
Stabiliser at rear for arm
Cabin full glazing
Reverse warning
Mirror package (mirrors right and left)
Hose burst protection
Narrow tyres (width with narrow bucket 1370 mm)
Security 24 (2000 h) Warranty extension to 24 months or 2000 operation hours
Security 36 (3000 h) Warranty extension to 6 months or 3000 operation hours
Side sliding windows
Special RAL paintwork (colour only for yellow parts)
Special non-RAL paintwork (colour only for yellow parts)
Road permit package
Extensive attachments range
Vandalism protection
Two-hand controls (H controls)
Boom and bucket cylinder