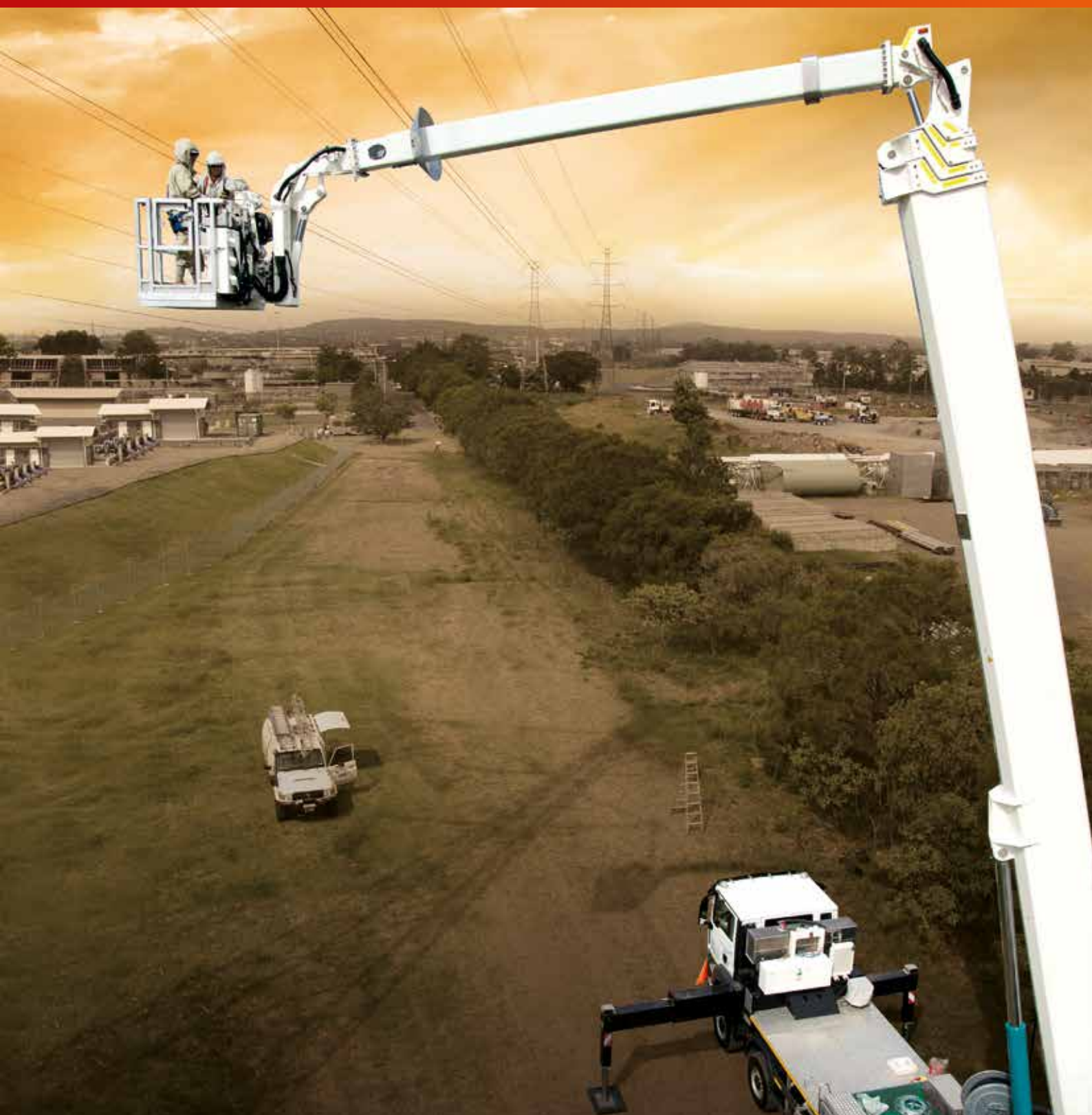


P 650 i *high
insulated
Class*

PALFINGER

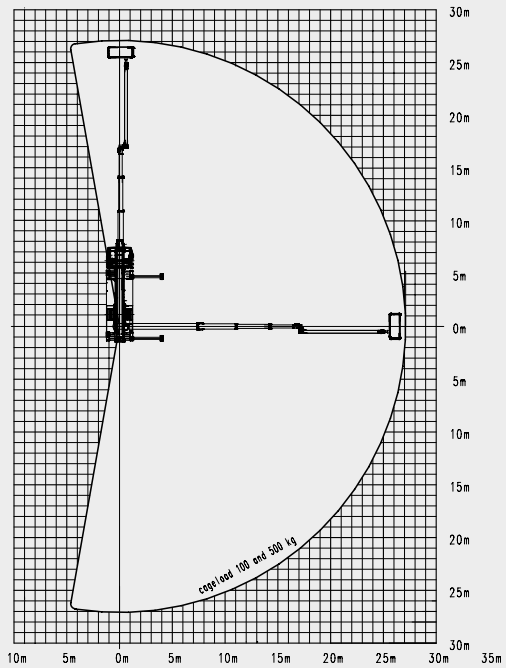
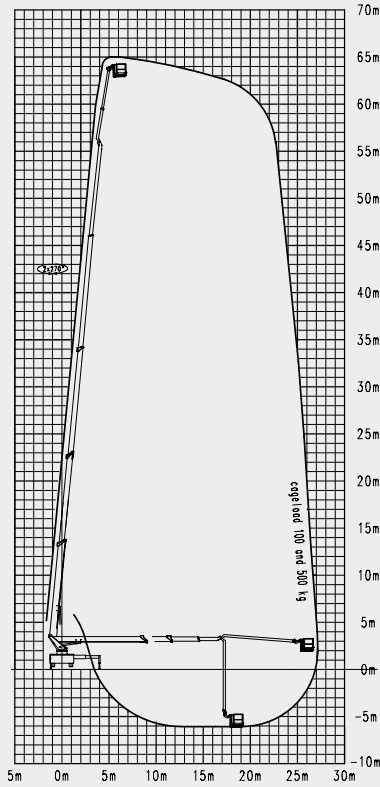
LIFETIME EXCELLENCE

HIGH VOLTAGE AT THE HIGHEST LEVEL

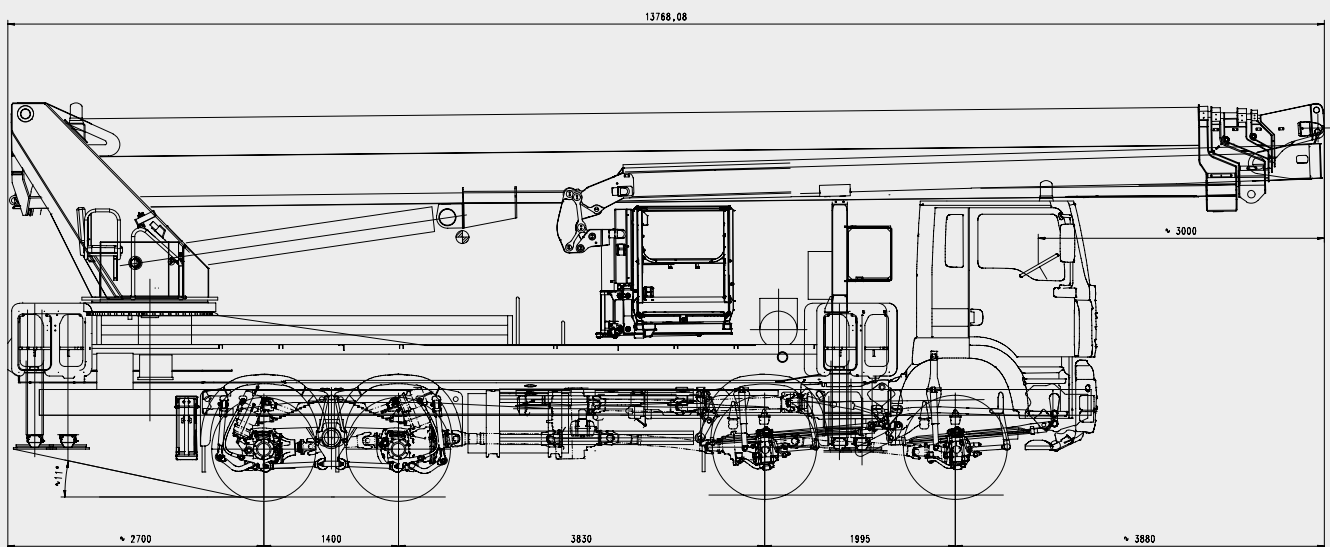


P 650 i *high insulated Class*

WORKING DIAGRAMS



DIMENSIONS





-
- Working height of 65 m
 - Insulated against 500.000 V
 - GFRP jib boom length of 4.6 m
 - UV-resistant
 - Extra-large corona ring
 - Dielectric strength as per ANSI 92.2
 - Individual stabilizer set up
 - Automated positioning system
 - Home function

TECHNICAL DATA

Max. working height	65 m
Max. basket floor height	63 m
Max. range	27 m
Tiltable range of rotary table	540°
Turning angle of workman basket	2 x 45°
Max. basket load	500 kg
Size of workman basket	1.8 m x 1.0 m x 1.2 m
Max. positioning accuracy	1°
Max. stabilization width	8.34 m
Min. stabilization width	5.45 m
Height in transport position	depends on carrier vehicle
Width in transport position	2.55 m
Total length	13.8 m
Total weight	depends on carrier vehicle

STANDARD EQUIPMENT

Aluminium bordering
Second control stand with colour display
Reversing camera
Intercom system
Visual and acoustic leakage current monitoring
Additional emergency operating element
Electro-hydraulic drive
Diesel-hydraulic drive

MANY SOLUTIONS TO MEET YOUR NEEDS



INSULATED WASHER

PALFINGER's insulated washer allows you to safely wash parts energised with voltages of up to 500 kV.

- Adjustable pressure stages: approx. 40 bar / 60 bar
- Approx. 10–15 m water jet
- Continuous testing of the conductivity of the water, including acoustic and visual warnings
- Automatic safety switch-off
- Acoustic warning signal when the water level gets low



MATERIAL HANDLER

It offers the support you need to perform various day-to-day tasks such as lifting and positioning the insulators.

- For loads of up to 250 kg
- Compactly integrated in the workman basket
- Rope length of approx. 58 m
- Two mechanical extension levels



COMPACT WORKMAN BASKET

PALFINGER's compact workman basket is ideal for activities with restricted access (e.g. work between power lines).

- Dimensions of 1,070 mm x 1,000 mm x 1,100 mm
- System for changing workman baskets
- 500 kg basket load
- Upright entry



HYDRAULIC WORKING CONNECTION

The hydraulic connection couplings in the workman basket provide an optimised supply for hydraulically driven tools

- 200 bar, 10 l/min
- Activated via the control panel
- Including ball tap and filter

Please contact us if you have any special requirements.

MANY SOLUTIONS FOR EFFICIENCY AND SAFETY

6

HIGHLIGHTS



PRECISION CONTROL ABILITY

- Stepless speed control thanks to a highly sensitive, electronically controlled proportional controller
- Limit position damper ensures your comfort



EASY AND SAFE HANDLING

- Large inspection window for the everyday checking of valves and of hydraulic and glass-fibre lines
- Watertight sight glass for dry canisters, including quick and easy removal
- All inspection points can be found in the extra-large corona ring



EFFICIENT

- Automatic levelling of the access platform saves time and ensures accurate alignment for maximum performance
- Continuous ground pressure monitoring allows operation only under absolutely stable conditions
- PALFINGER's home function allows the access platform to be folded down quickly and conveniently



GRAPHIC COLOUR DISPLAY

- Safe guidance through the individual work steps
- Simple, symbol-based representation of the current situation
- Current information on operating statuses



PORTABLE PANEL

- Optimal view of the working range
- Can be positioned in any available space in the workman basket



COMPACT – FLEXIBLE

- Very large working range with a 200° tiltable range from the rotary table on a small stabilizer surface - ideal for confined set-up areas
- A low set-up height of less than 10 m allows operation even under obstacles

LIFETIME EXCELLENCE

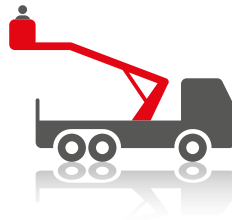
THE RESULT IS **PALFINGER ACCESS PLATFORMS** FEATURING THE MOST STATE-OF-THE-ART HEIGHT TECHNOLOGY THAT ACHIEVE ABSOLUTE PEAK PERFORMANCES, EVEN WHEN CONFRONTED WITH THE MOST DIFFICULT OF JOBS IN PRACTICE. **DEVELOPED FOR THE GLOBAL MARKET, DESIGNED FOR THE FUTURE.**

BETTER
SOLUTIONS

BETTER
EFFICIENCY

BETTER
ERGONOMICS

HIGHER VALUE
RETENTION



HIGHER
AVAILABILITY

HIGHER
SERVICEABILITY

BETTER
ECOLOGY

MORE
RELIABILITY

For further information please visit: www.palfinger.com/thebrand