

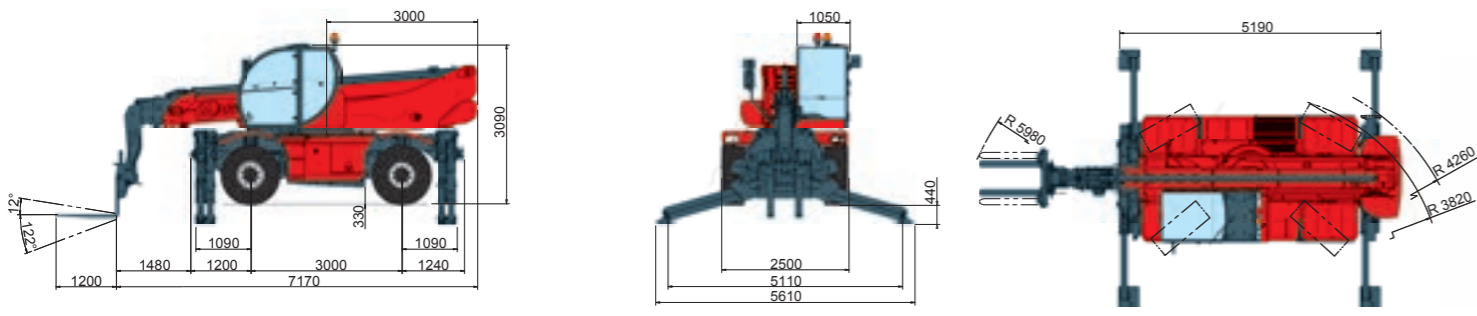
<b>MACHINE MODEL</b>	Rotating telescopic handler	RTH 5.23 SH	
	Maximum lifting capacity	4.999 kg (center of gravity 500 mm)	
	Maximum lifting height	23,30 m	
<b>ENGINE - DEUTZ</b>	Type	Deutz TCD 3.6 L4 - stage IV	Deutz TCD 3.6 L4 EDG - stage 3A compliant
	Rated power	100 kW - 134 HP at 2.200 rpm	100 kW - 134 HP at 2.200 rpm
	Maximum torque	500 Nm at 1.600 rpm	500 Nm at 1.600 rpm
	Displacement	3,6 l	3,6 l
	Cylinders	4 in line	4 in line
	Fuel	Diesel direct injection turbocharged	Diesel direct injection turbocharged
	Cooling system	Water — intercooler	Water — intercooler
<b>TRANSMISSION</b>	Type	Hydrostatic	
	Model	Bosch — Rexroth	
	Maximum pressure	500 bar	
	Displacements	Variable displacement pump electronically controlled Variable displacement motor	
	Gear box	2 speeds forward-reverse	
<b>AXLES AND BRAKES</b>	Type	Axles with epicyclic reduction gear	
	Rear axle	Oscillating and steering with hydraulic locking	
	Front axle	Oscillating and steering with automatic levelling +/- 10°	
	Service brake	Hydraulically activated, oil-immersed multi-disc type on each axle	
	Parking brake	Hydraulic with negative action	
	Tyres dimensions	445/65 R 22,5	
<b>PERFORMANCE</b>	Max. travel speed	40 km/h	
	Drawbar pull	66 kN	
	Gradeability	44%	
	Turning radius (end of forks)	5.980 mm	
<b>WEIGHTS</b>	Total unladen	17.850 kg	
	Front axle unladen (boom retracted and lowered)	7.600 kg	
	Rear axle unladen (boom retracted and lowered)	10.250 kg	
<b>TANK CAPACITIES</b>		Deutz stage IV	Deutz stage 3A
	Fuel tank	180 l	180 l
	AdBlue	10 l	n.a.
	Hydraulic oil tank	190 l	190 l
	Engine oil tank	8 l	8 l
	Cooling liquid	23 l	23 l
<b>HYDRAULIC CIRCUIT</b>	Max. operating system pressure	350 bar	
	Circuit type	Load sensing	
	Service pump	Bosch Rexroth — Variable displacement	
	Controls for boom and turret movements	Danfoss — Electroproportional valve SIL 2	
	Controls for stabilizers	Bosch Rexroth — Electro-hydraulics controls	
	Movements control	2 joystick Danfoss with two shafts with dead man safety device - Management with CAN bus technology	
<b>CONFORMITY TO STANDARDS</b>	EN 13849: concerning the safety of all controls of the machine EN 13000: concerning the standard of hydraulic cranes EN 280: concerning the standard of aerial platforms FOPS/ROPS 97/68/CE: concerning engine emissions standards EN1459-2		

Gruppo Industriale FG - 17C0510

The data in this brochure are informative and subject to change without notice



Maximum lifting height: 23,30 m  
 Maximum reach: 19,70 m  
 Electronically controlled hydrostatic transmission  
 Automatic levelling device  
 Scissors stabilizers



REV07

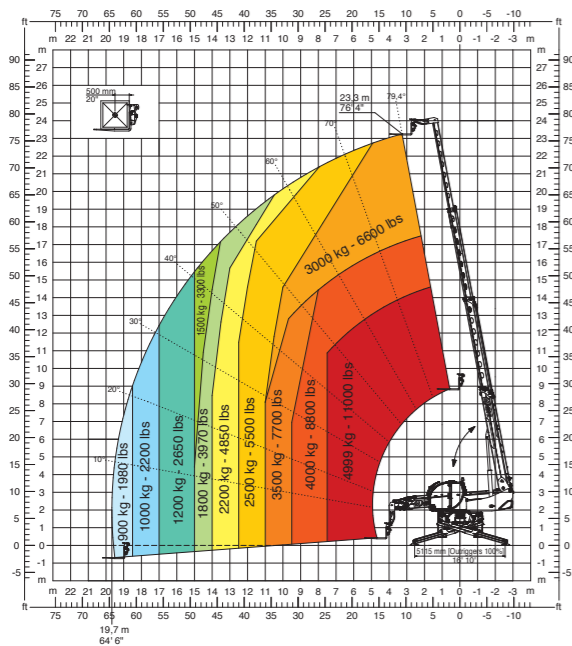
# RTH5.23 SH

**Magni Telescopic Handlers srl**

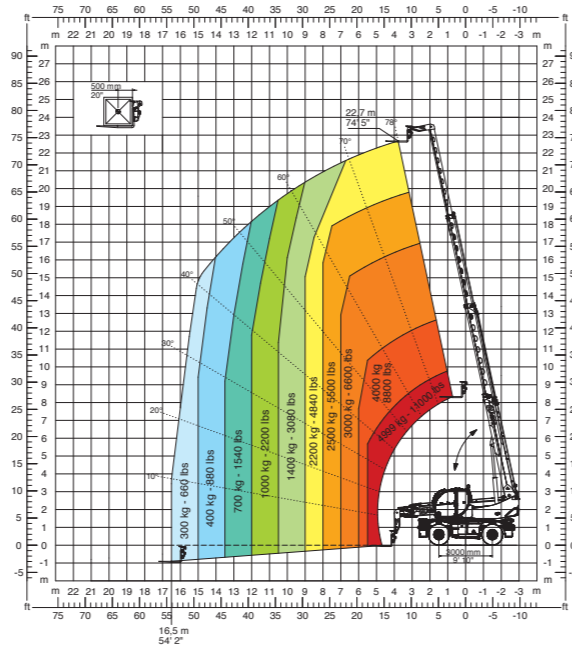
Via Magellano, 22 - 41013 Castelfranco Emilia, Modena, Italia - Tel: +39 059 8630811 - Fax: +39 059 8638012

commerciale@magnith.com - www.magnith.com

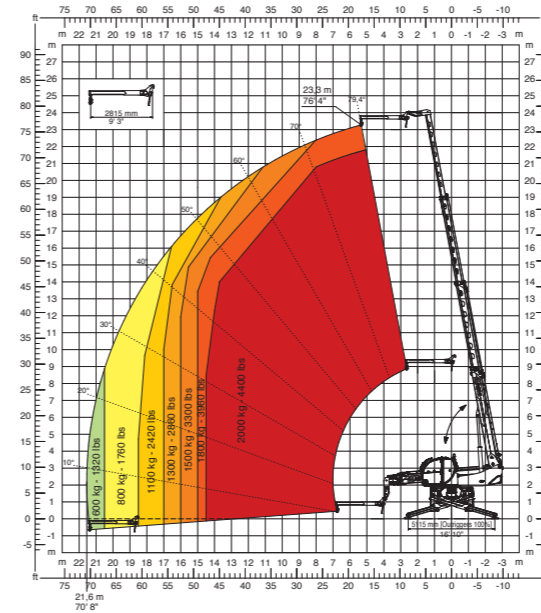
360° fully extended stabilizers load chart with forks



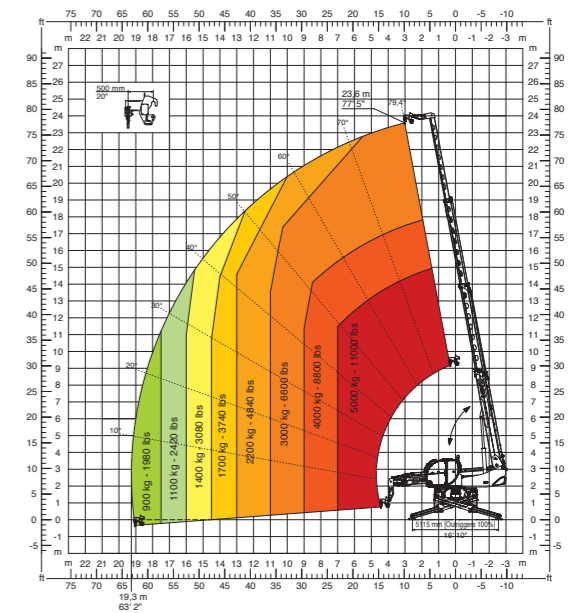
Frontal position load chart on tyres with forks



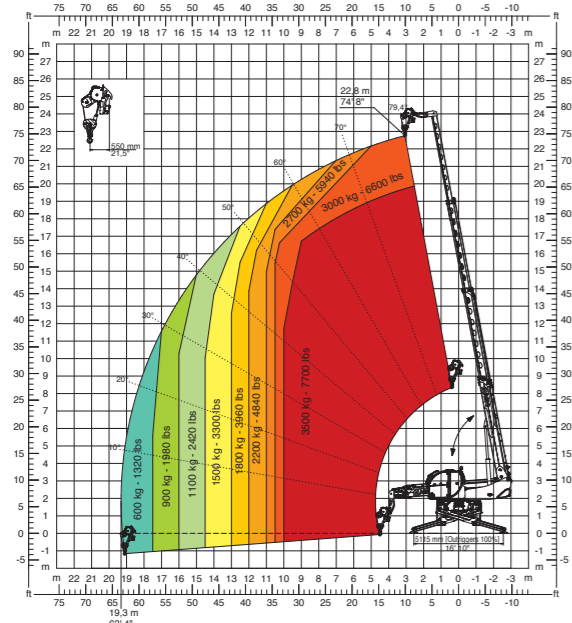
**J 2000**  
Jib 2.000 kg



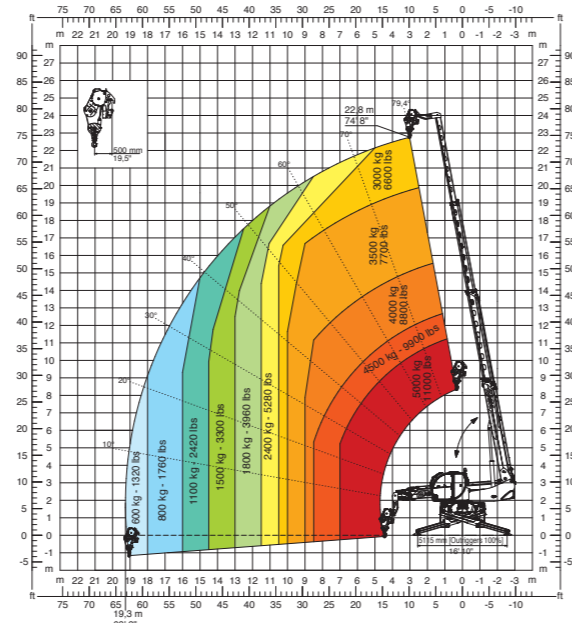
**H5**  
Hook 5 t



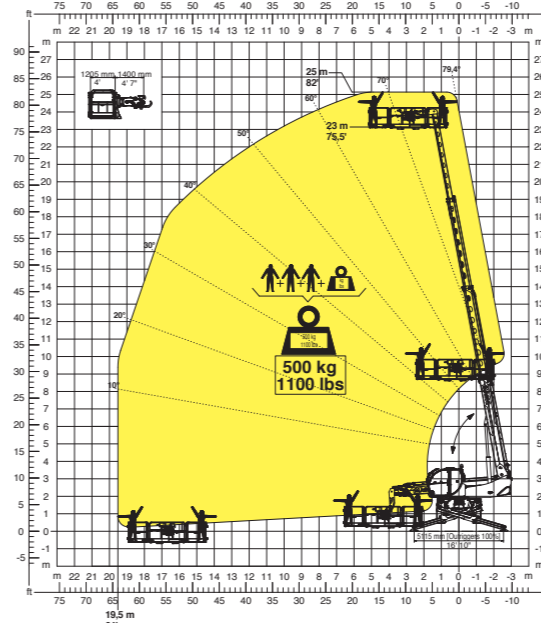
**W 3,5**  
Winch 3,5 t



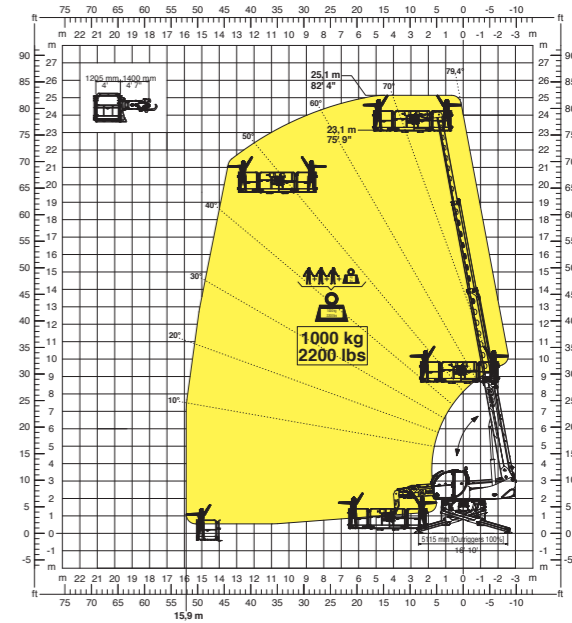
**W 5**  
Winch 5 t



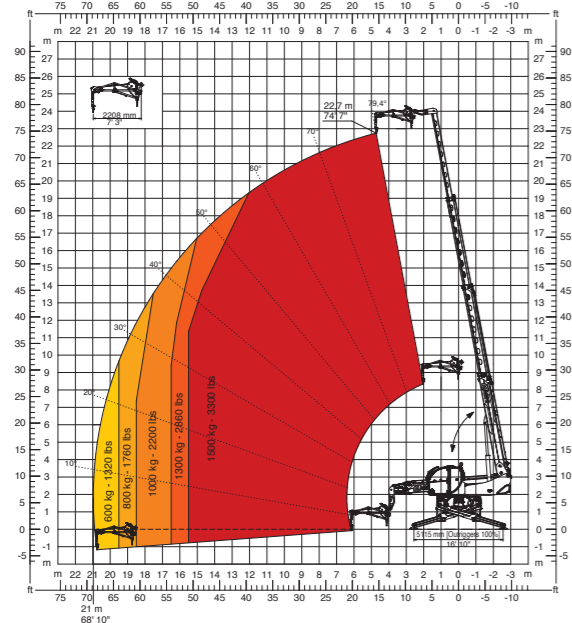
**REP 2-4,5**  
Rotating extendable man platform 500 kg



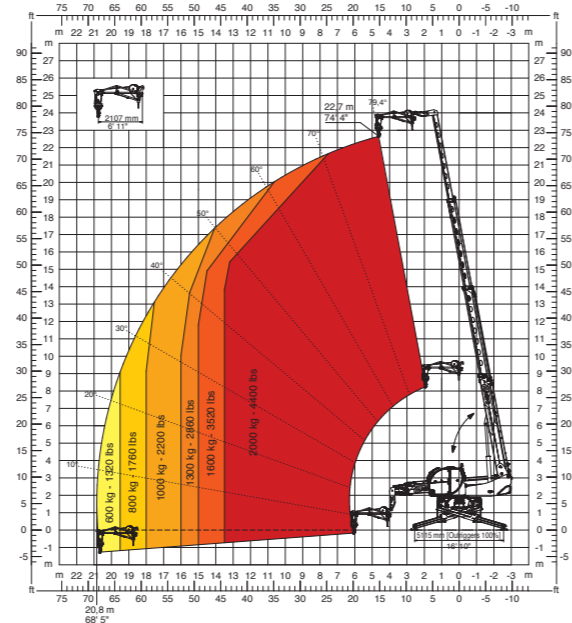
**REP 10.2-4,7**  
Rotating extendable man platform 1.000 kg



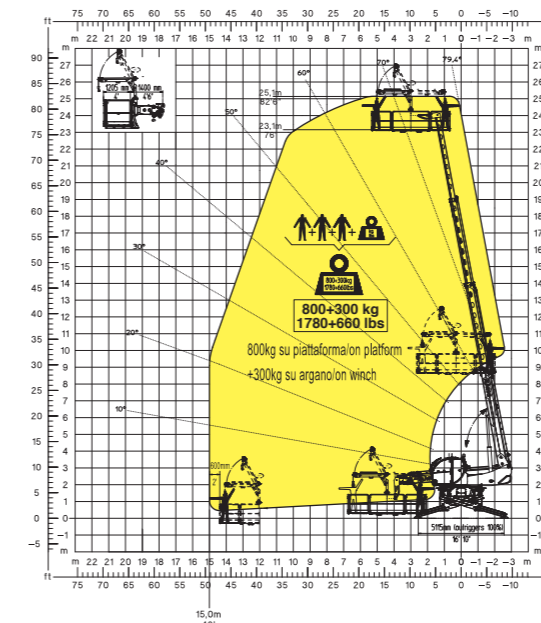
**JW 1500**  
Jib winch 1.500 kg



**JW 2000**  
Jib winch 2.000 kg



**REP 8.2-4,7 W0,3**  
Rotating platform 800 kg with winch 300 kg



**RP 2.2**  
Rotating fixed platform 500 kg

